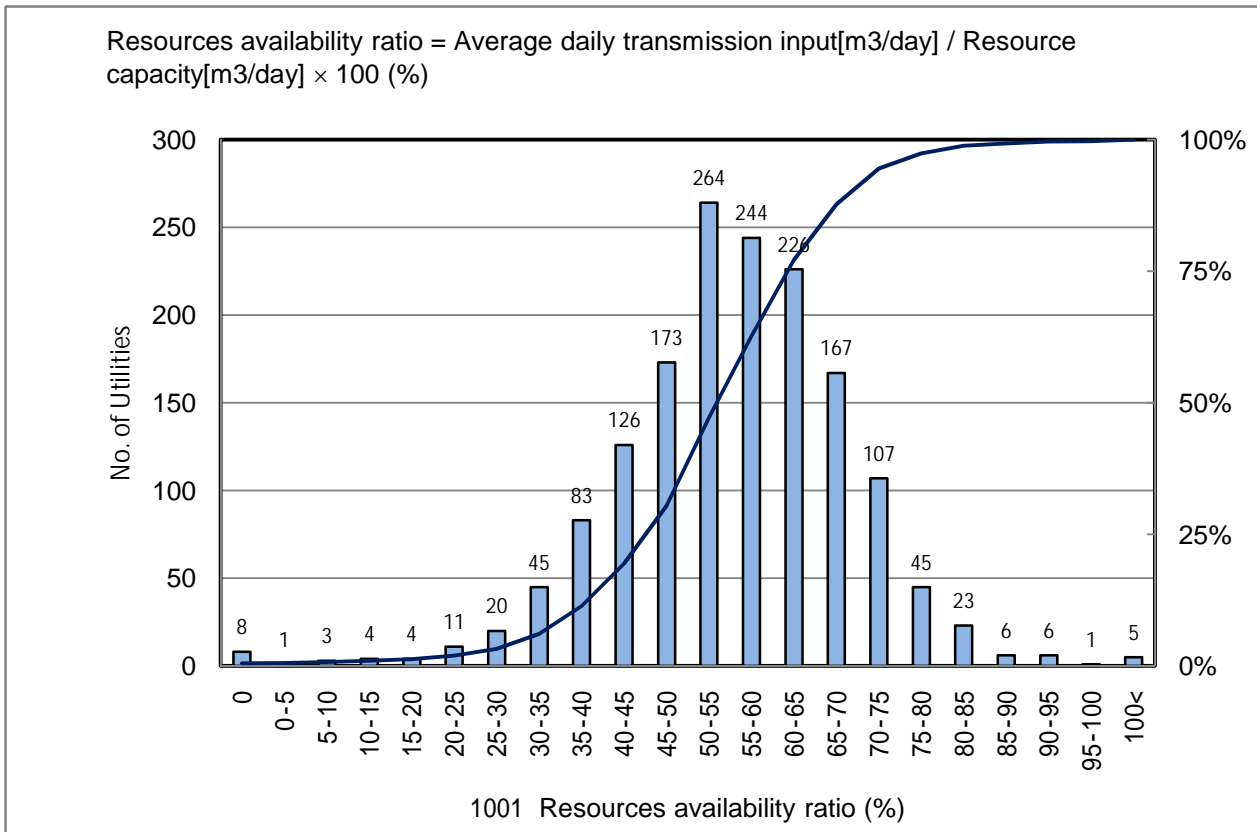


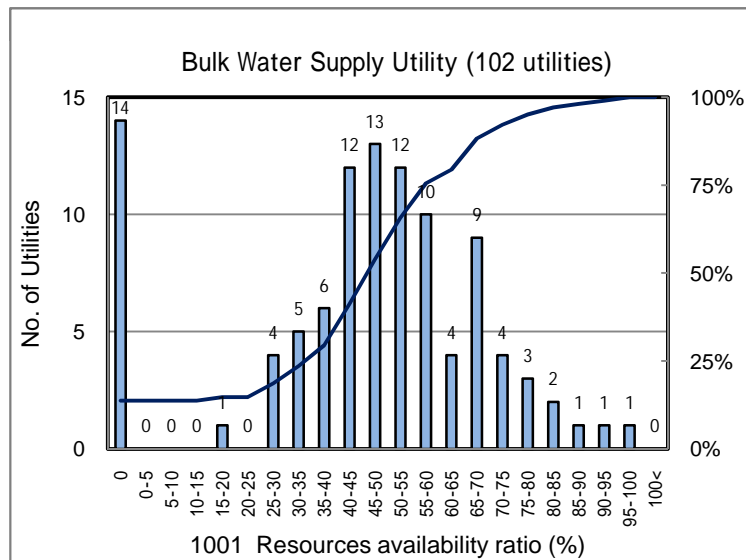
# 1001 Resources availability ratio(%)

No. of Utilities:1567

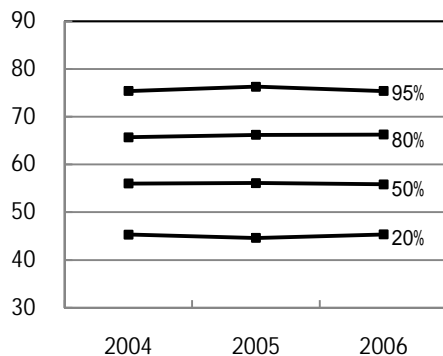


## Percentile Value

W.S.	2004	2005	2006	Rem
95%	75.4	76.3	75.4	
80%	65.7	66.2	66.3	
75%	63.9	64.1	64.0	
50%	56.0	56.1	55.9	
25%	47.9	47.6	48.0	
20%	45.3	44.6	45.3	
5%	34.4	31.9	33.0	



## Tendency of past 3 years



## Percentile Value

B.W.S.	2006	Rem
80%	65.0	
50%	48.2	