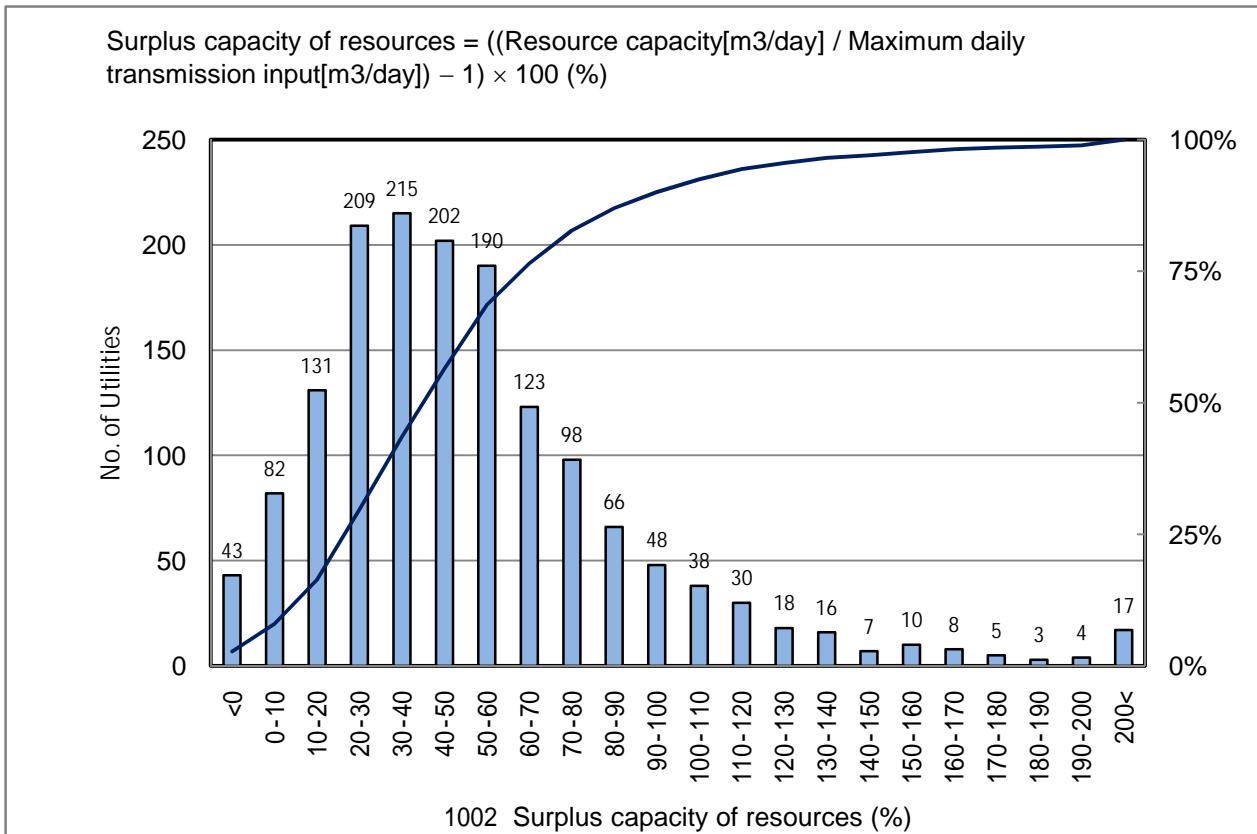


# 1002 Surplus capacity of resources(%)

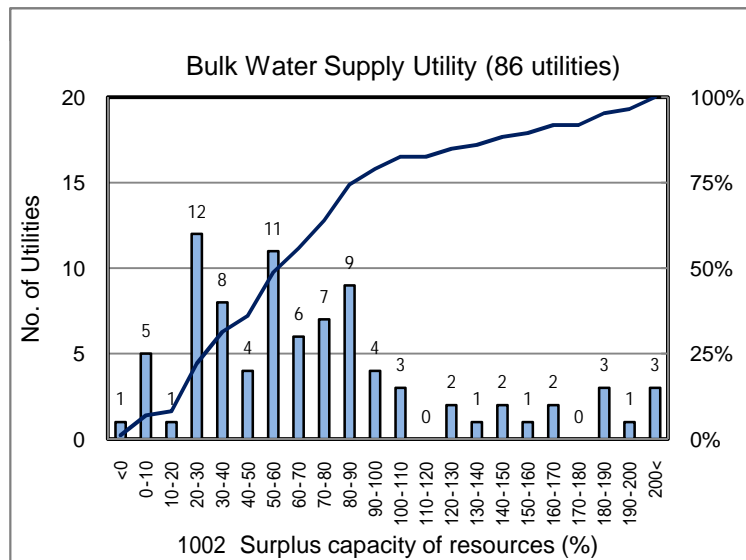
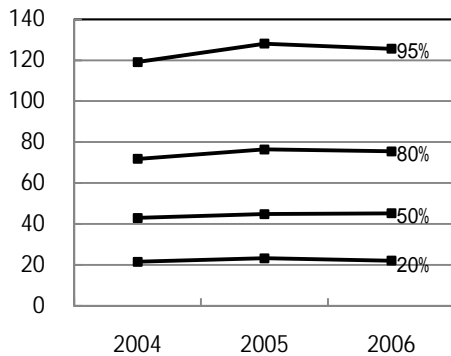
No. of Utilities:1563



## Percentile Value

W.S.	2004	2005	2006	Rem
95%	119.1	128.1	125.6	
80%	71.8	76.4	75.5	
75%	65.3	67.8	67.7	
50%	42.9	44.8	45.2	
25%	25.4	26.7	26.9	
20%	21.5	23.2	22.1	
5%	5.4	6.0	5.7	

## Tendency of past 3 years



## Percentile Value

B.W.S.	2006	Rem
80%	101.0	
50%	63.0	