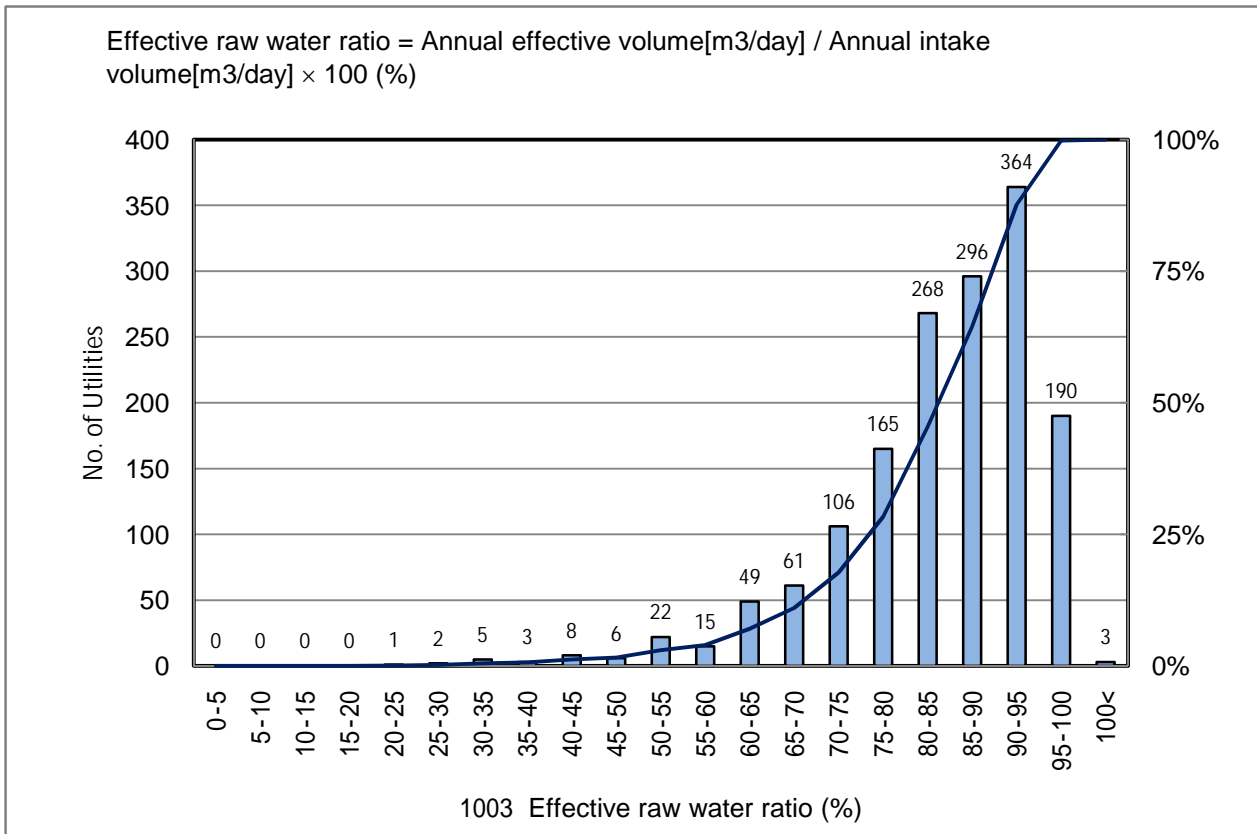


# 1003 Effective raw water ratio (%)

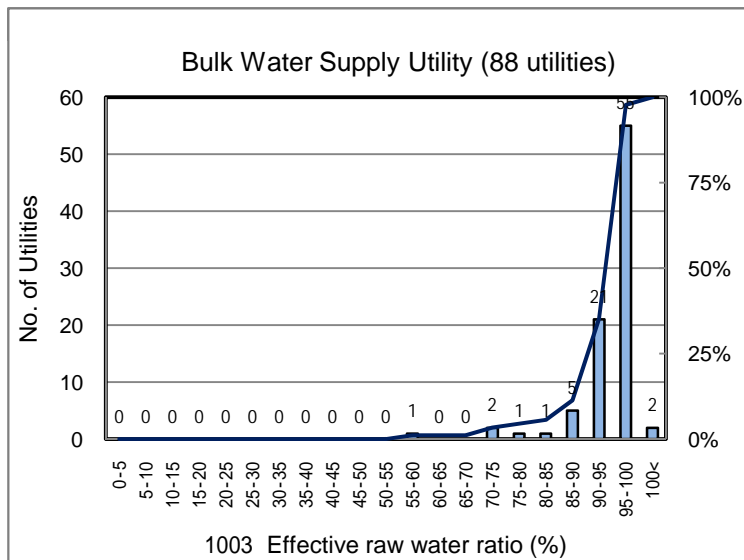
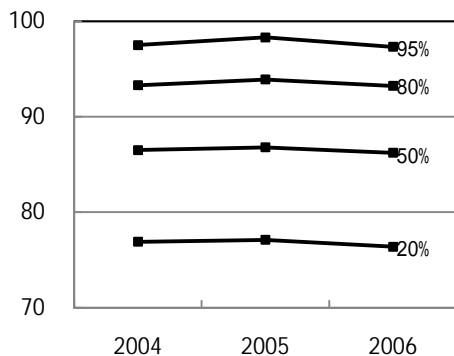
No. of Utilities:1564



Percentile Value

W.S.	2004	2005	2006	Rem
95%	97.5	98.3	97.3	
80%	93.3	93.9	93.2	
75%	92.3	92.7	92.1	
50%	86.5	86.8	86.2	
25%	79.0	79.3	78.8	
20%	76.9	77.1	76.4	
5%	62.7	61.4	61.8	

Tendency of past 3 years



Percentile Value

B.W.S.	2006	Rem
80%	99.3	
50%	96.9	