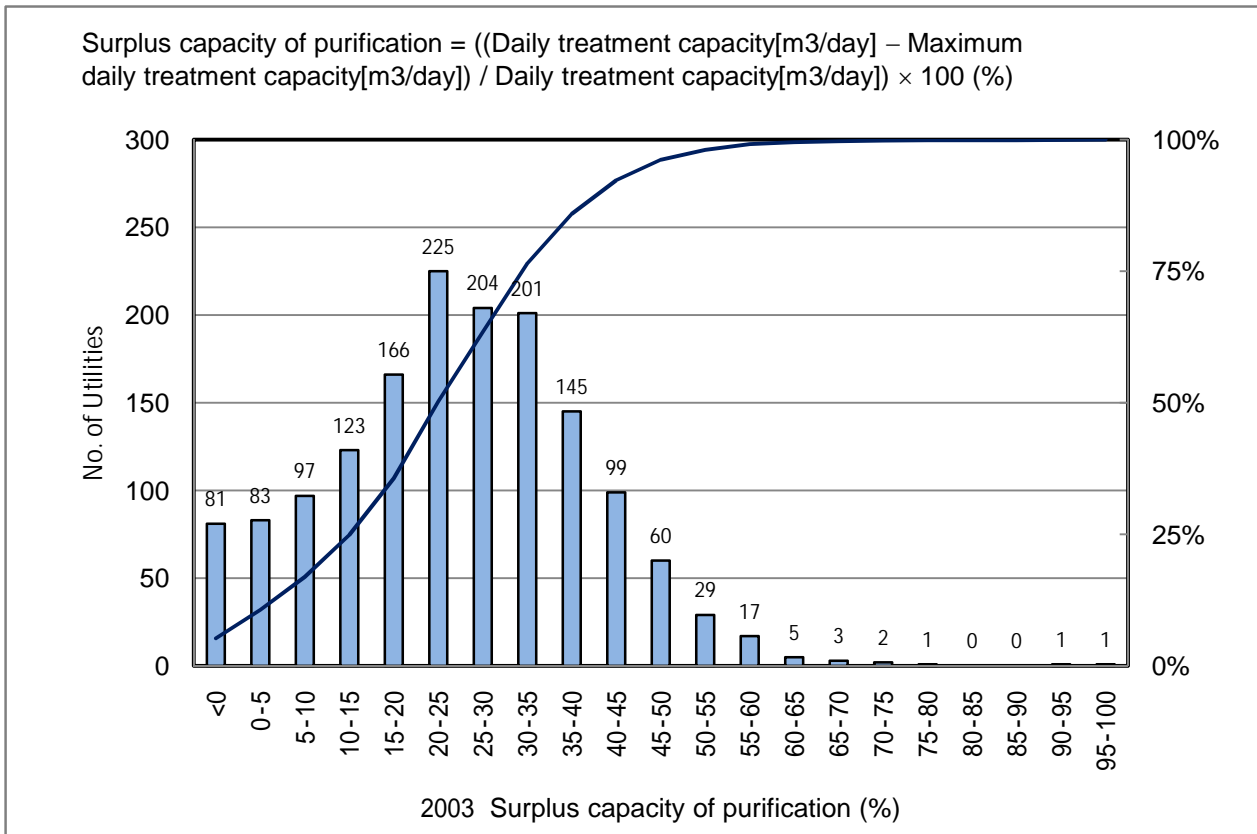


2003 Surplus capacity of purification (%)

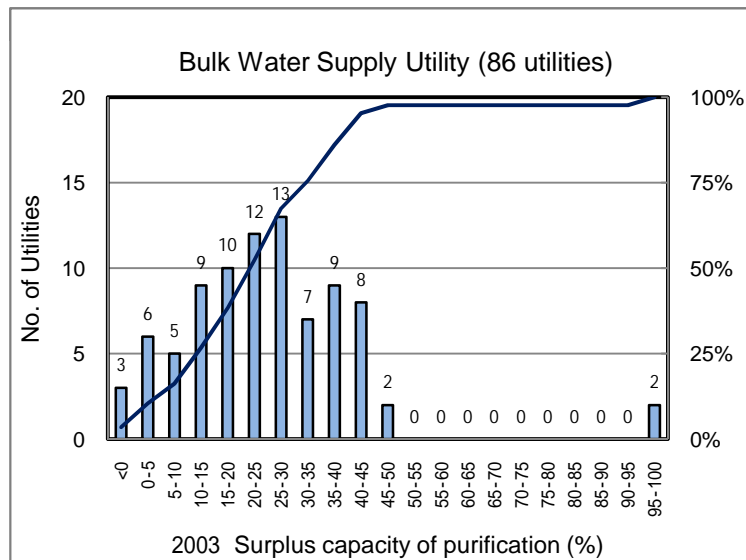
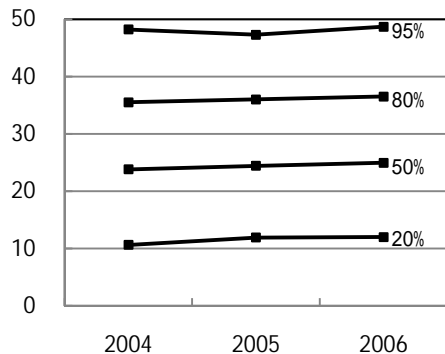
No. of Utilities:1543



Percentile Value

W.S.	2004	2005	2006	Rem
95%	48.2	47.3	48.7	
80%	35.5	36.0	36.5	
75%	33.0	33.8	34.5	
50%	23.8	24.4	25.0	
25%	13.5	14.6	15.1	
20%	10.6	11.9	12.0	
5%	0.0	0.0	0.0	

Tendency of past 3 years



Percentile Value

B.W.S.	2006	Rem
80%	37.7	
50%	23.8	