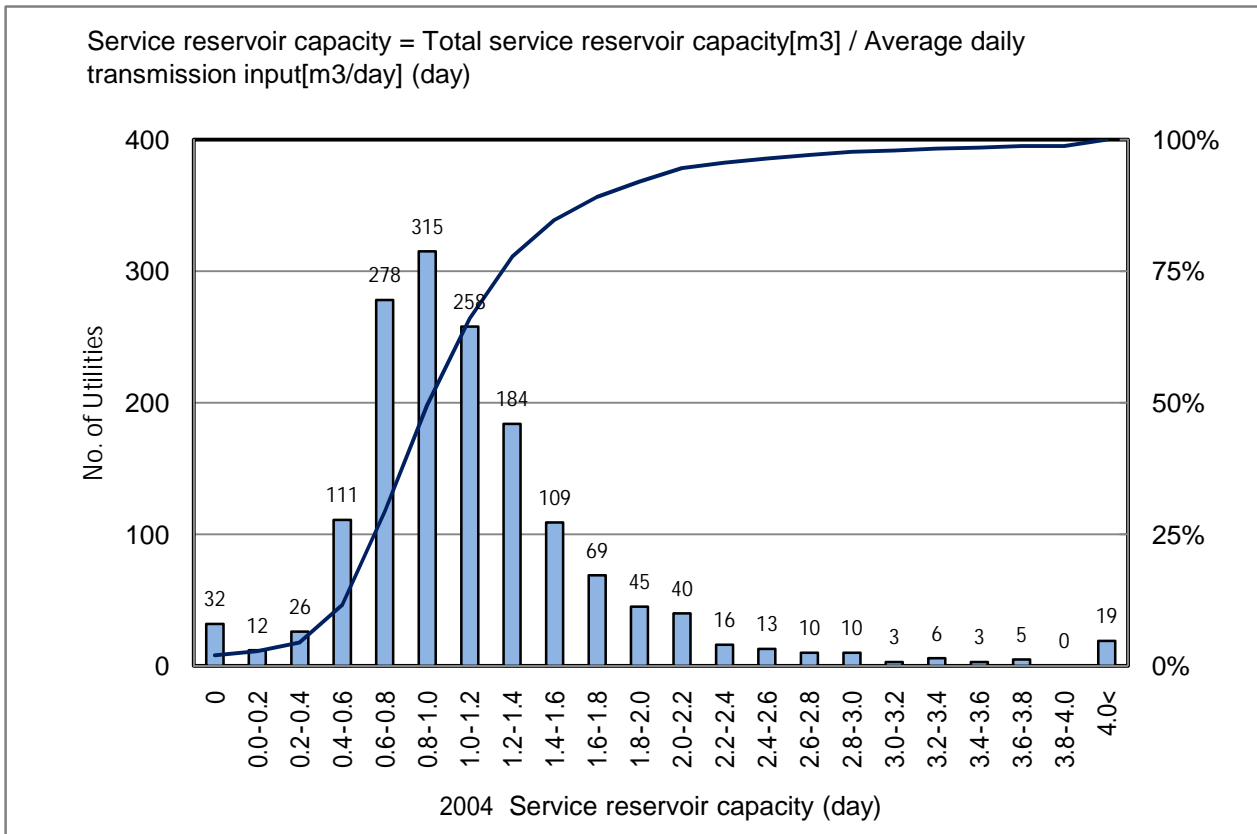


# 2004 Service reservoir capacity (day)

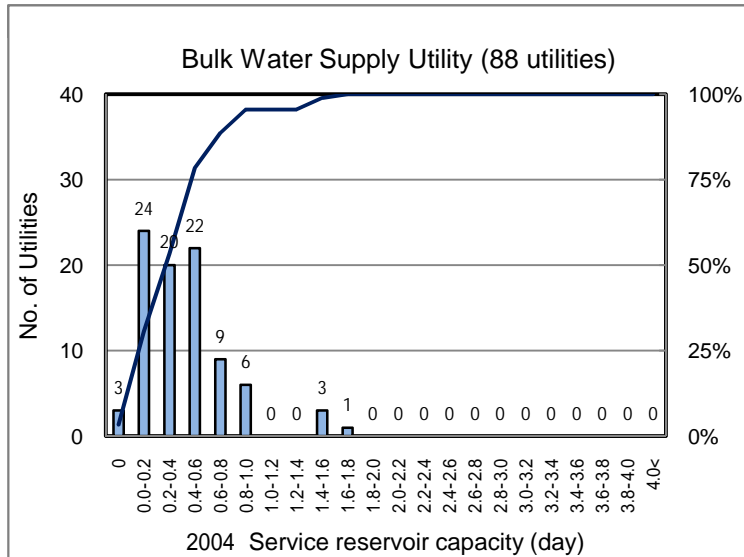
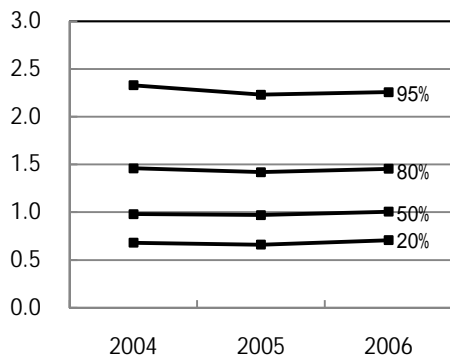
No. of Utilities:1564



### Percentile Value

W.S.	2004	2005	2006	Rem
95%	2.33	2.23	2.26	
80%	1.46	1.42	1.46	
75%	1.33	1.31	1.34	
50%	0.98	0.97	1.01	
25%	0.73	0.71	0.75	
20%	0.68	0.66	0.71	
5%	0.42	0.25	0.43	

### Tendency of past 3 years



### Percentile Value

B.W.S.	2006	Rem
80%	0.61	
50%	0.37	