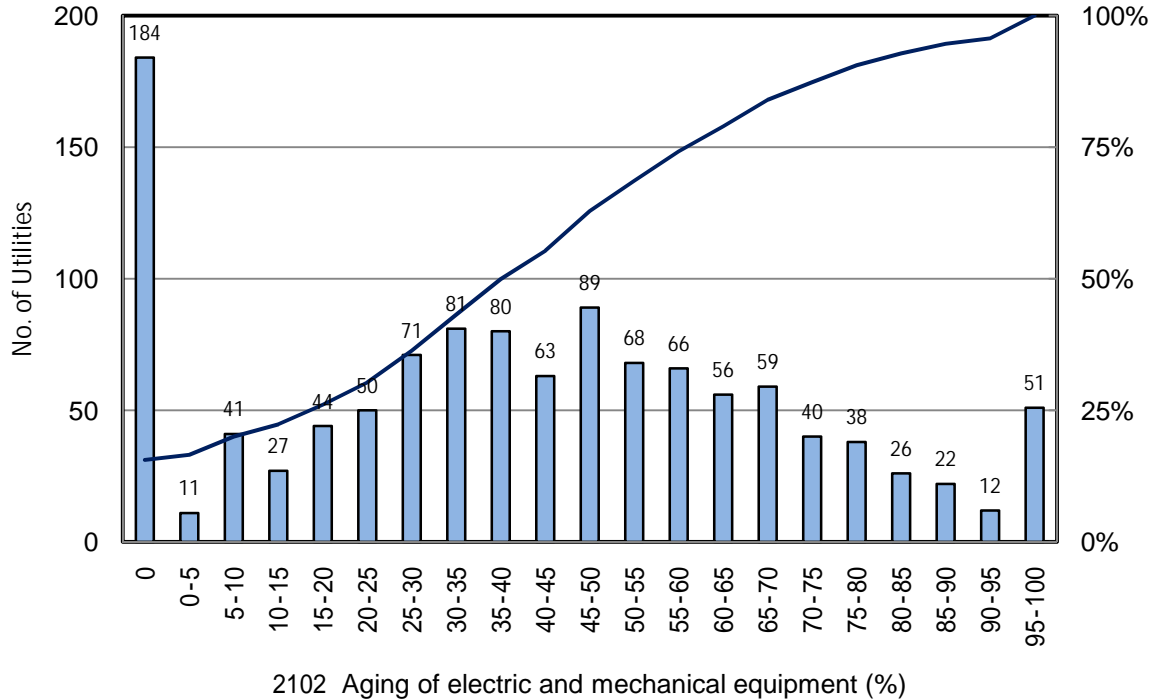


2102 Aging of electric and mechanical equipment (%)

No. of Utilities:1179

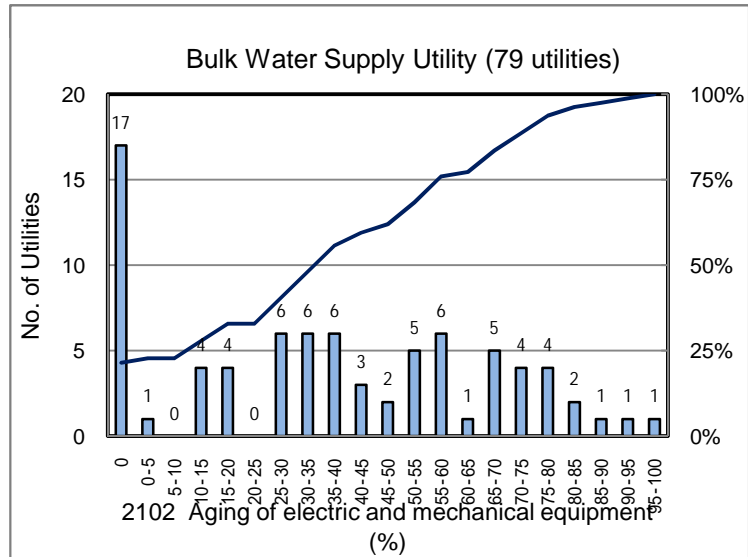
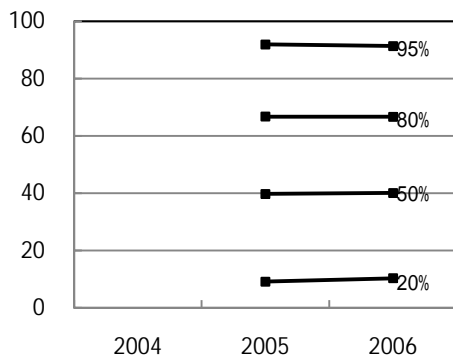
Aging of electric and mechanical equipment = Number of electric and mechanical equipment exceeding life cycle[No.] / Total number of electric and mechanical equipment[No.] × 100 (%)



Percentile Value

W.S.	2004	2005	2006	Rem
95%		91.9	91.3	
80%		66.7	66.7	
75%		61.5	60.8	
50%		39.7	40.0	
25%		16.7	19.2	
20%		9.1	10.3	
5%		0.0	0.0	

Tendency of past 3 years



Percentile Value

B.W.S.	2006	Rem
80%	66.7	
50%	35.6	