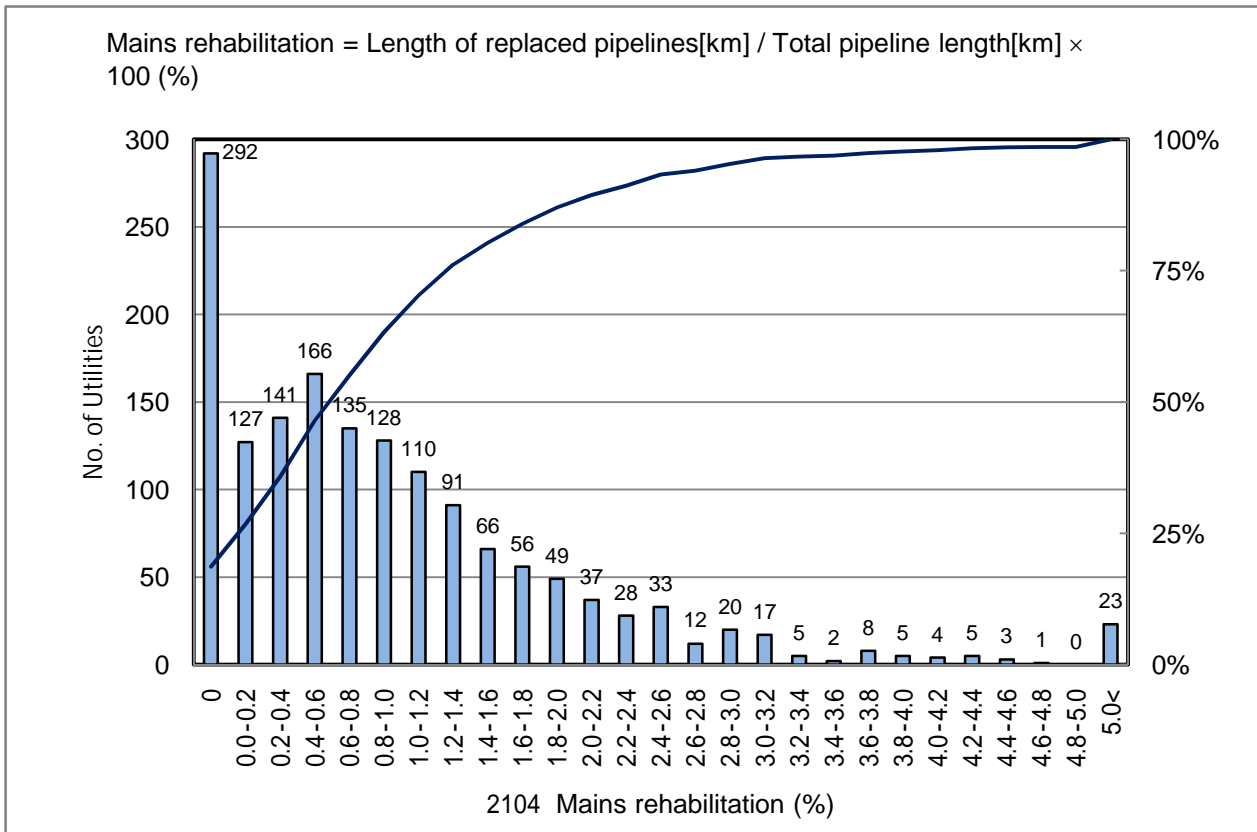


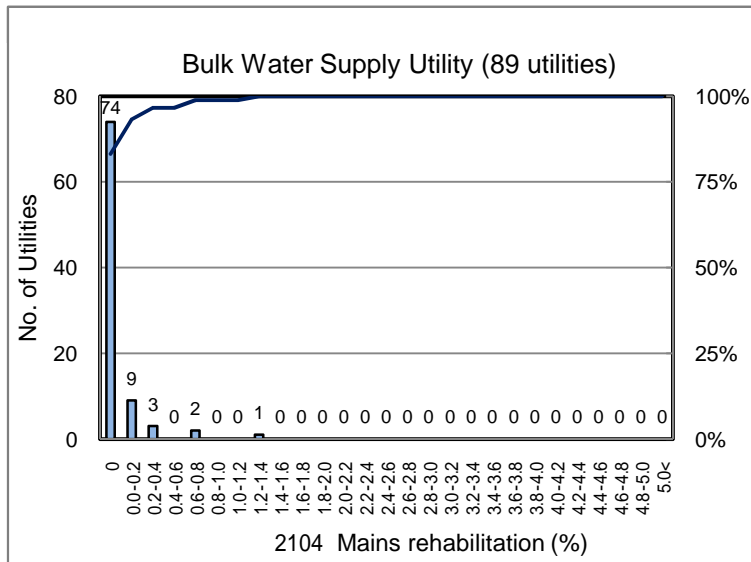
# 2104 Mains rehabilitation (%)

No. of Utilities:1541

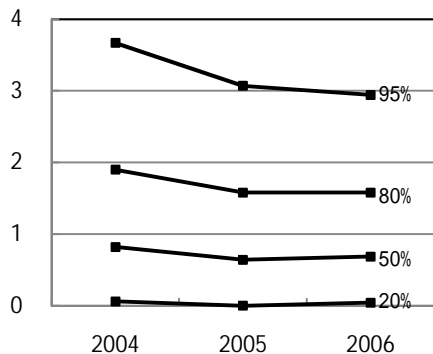


Percentile Value

W.S.	2004	2005	2006	Rem
95%	3.67	3.07	2.94	
80%	1.90	1.58	1.58	
75%	1.68	1.35	1.35	
50%	0.82	0.64	0.69	
25%	0.19	0.13	0.18	
20%	0.06	0.00	0.04	
5%	0.00	0.00	0.00	



Tendency of past 3 years



Percentile Value

B.W.S.	2006	Rem
80%	0.00	
50%	0.00	