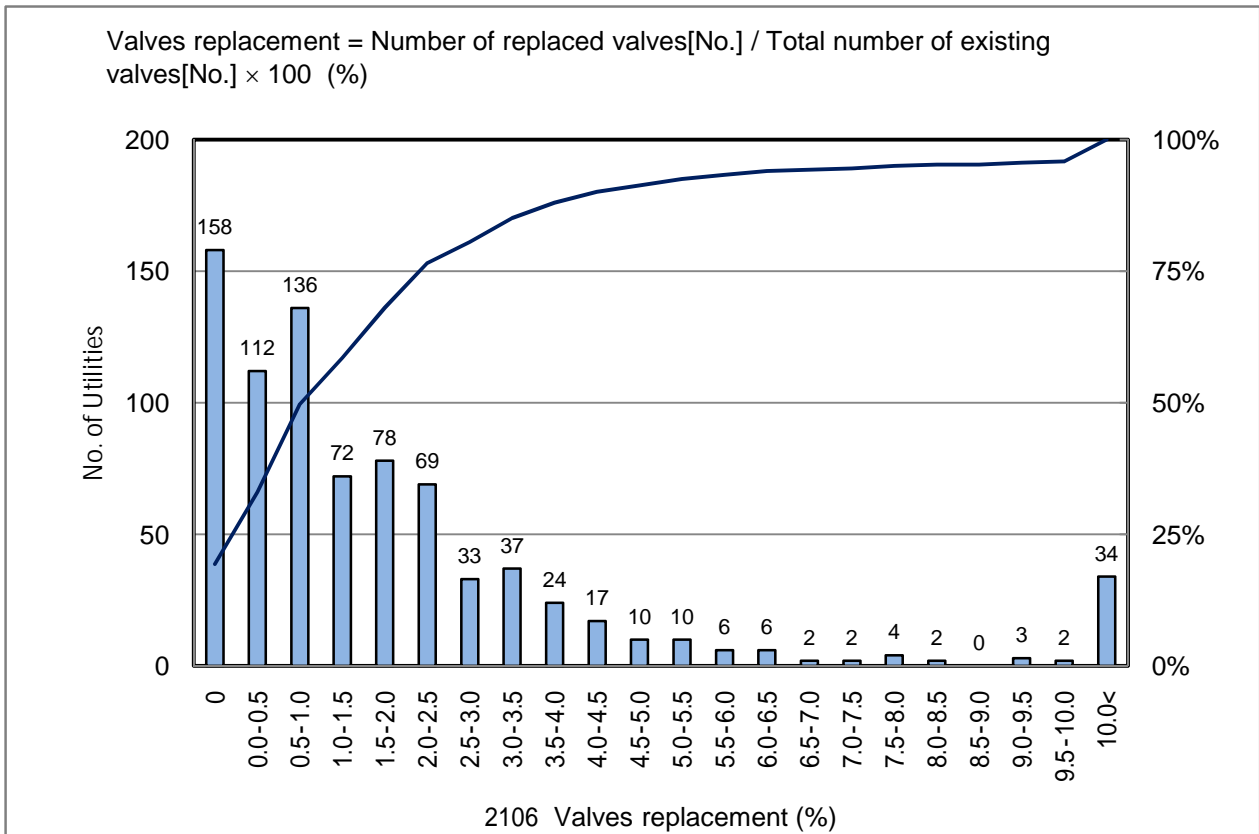


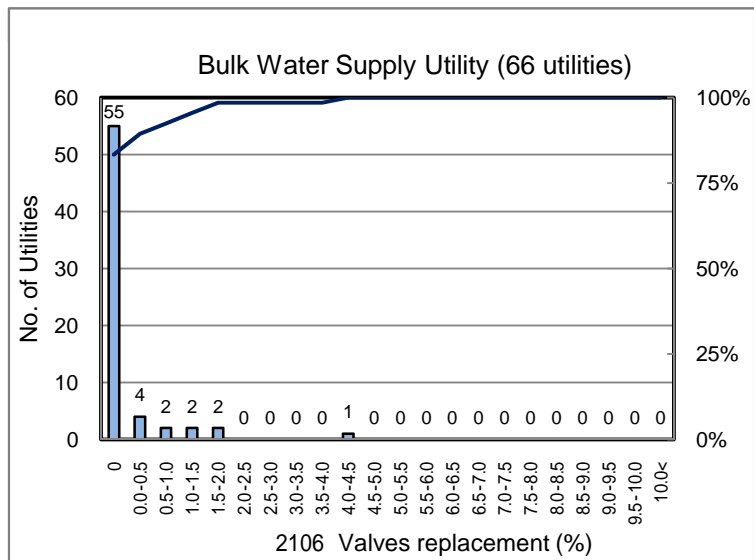
# 2106 Valves replacement (%)

No. of Utilities:817

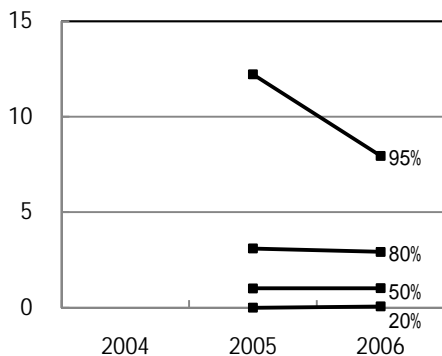


Percentile Value

W.S.	2004	2005	2006	Rem
95%		12.22	7.95	
80%		3.10	2.92	
75%		2.53	2.43	
50%		1.01	1.02	
25%		0.13	0.29	
20%		0.00	0.07	
5%		0.00	0.00	



Tendency of past 3 years



Percentile Value

B.W.S.	2006	Rem
80%	0.00	
50%	0.00	