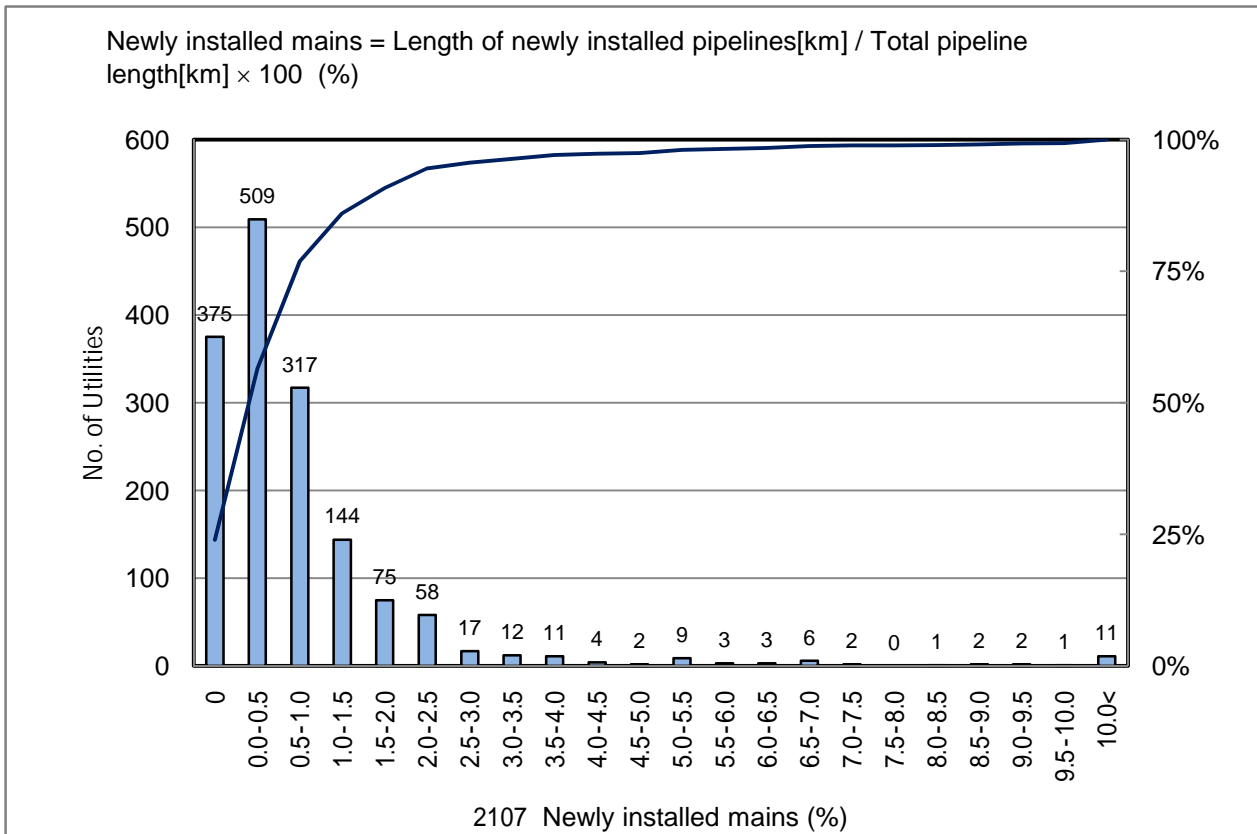


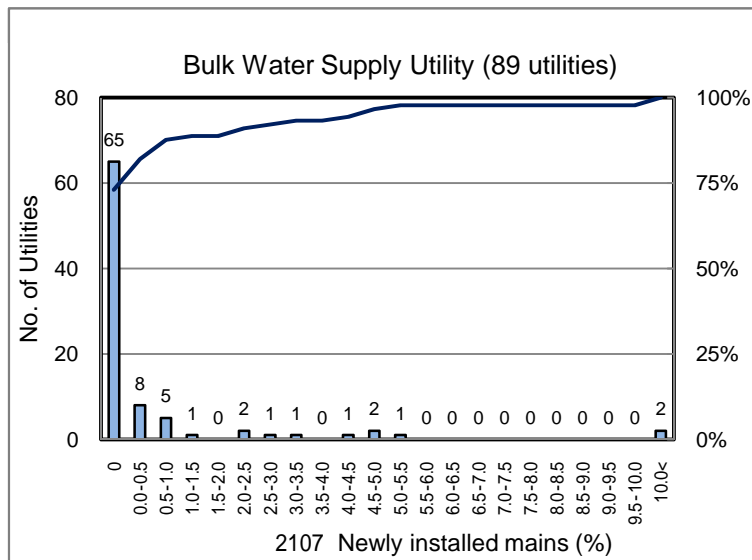
2107 Newly installed mains (%)

No. of Utilities:1564

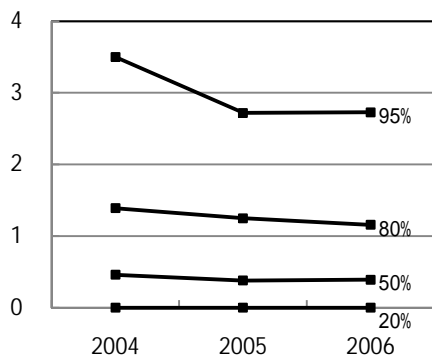


Percentile Value

W.S.	2004	2005	2006	Rem
95%	3.50	2.72	2.73	
80%	1.39	1.25	1.16	
75%	1.17	1.00	0.94	
50%	0.46	0.38	0.39	
25%	0.03	0.00	0.02	
20%	0.00	0.00	0.00	
5%	0.00	0.00	0.00	



Tendency of past 3 years



Percentile Value

B.W.S.	2006	Rem
80%	0.16	
50%	0.00	