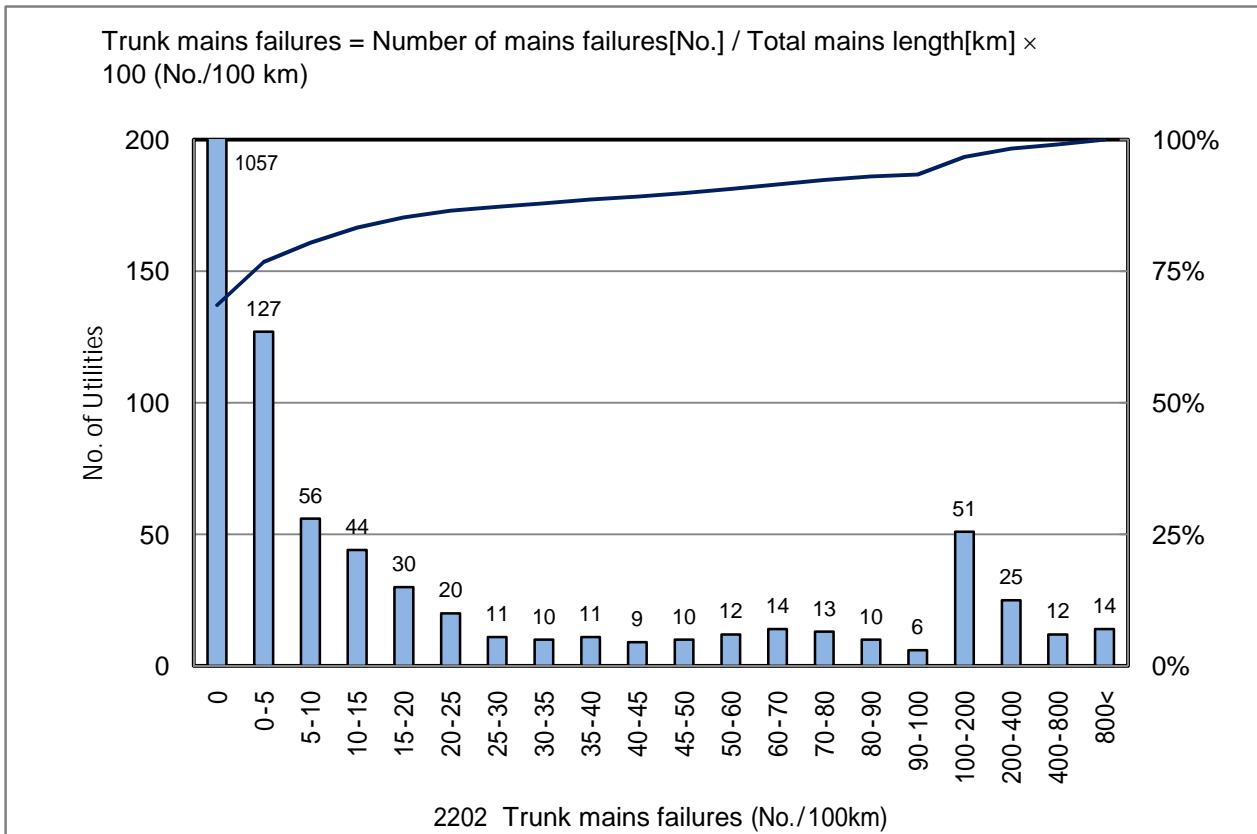


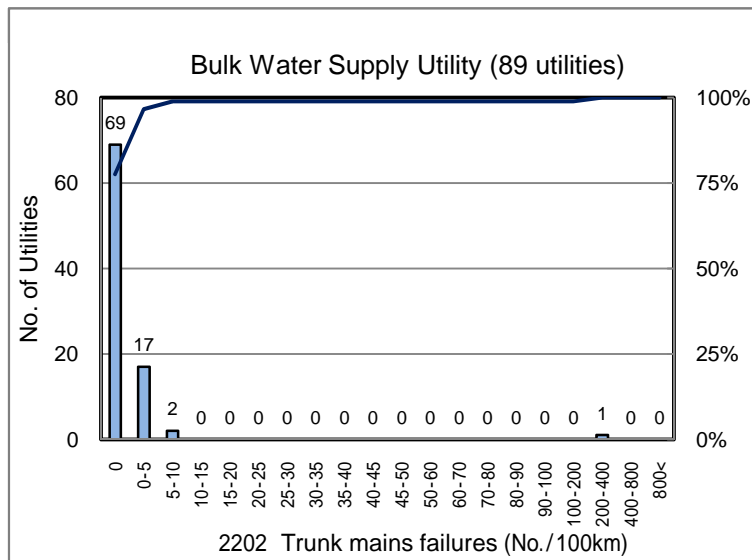
## 2202 Trunk mains failures (No./100km)

No. of Utilities:1542

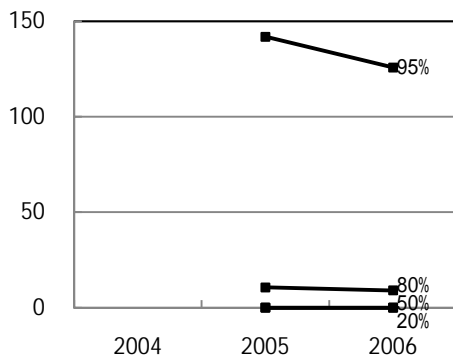


### Percentile Value

W.S.	2004	2005	2006	Rem
95%		141.9	125.8	
80%		10.6	9.0	
75%		4.0	3.5	
50%		0.0	0.0	
25%		0.0	0.0	
20%		0.0	0.0	
5%		0.0	0.0	



### Tendency of past 3 years



### Percentile Value

B.W.S.	2006	Rem
80%	0.4	
50%	0.0	