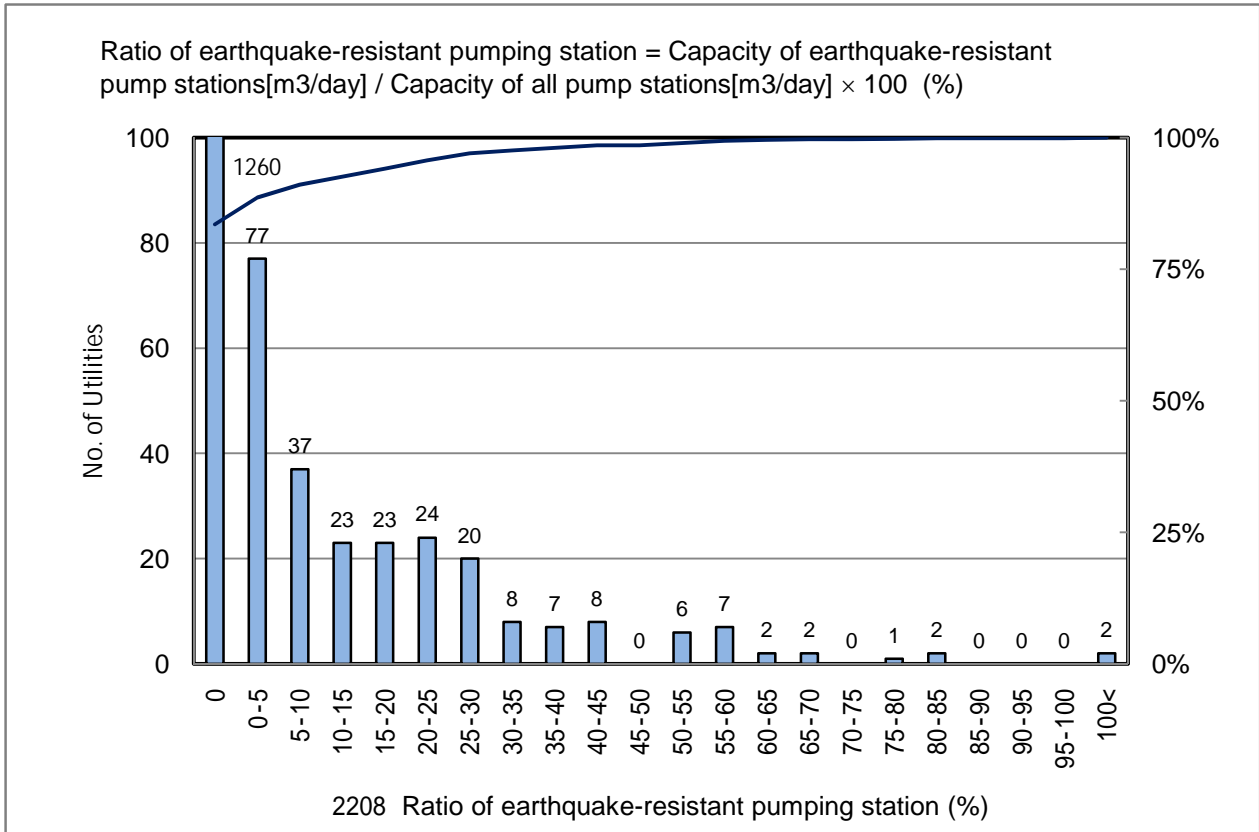


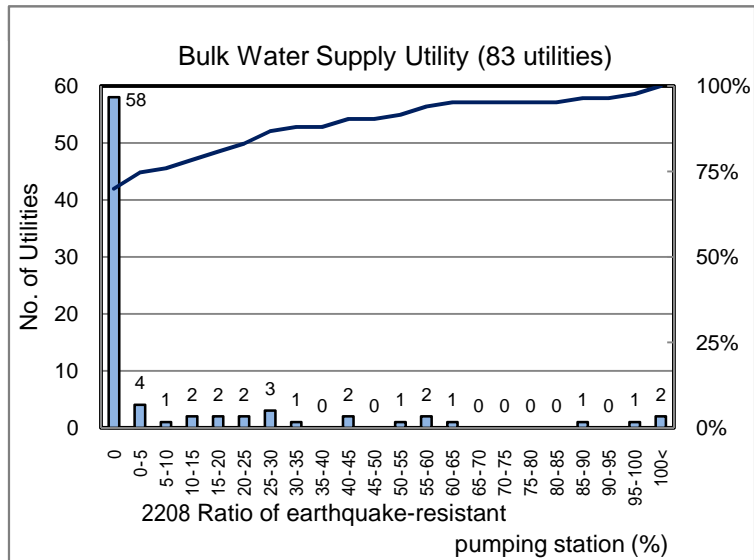
2208 Ratio of earthquake-resistant pumping station (%)

No. of Utilities:1509

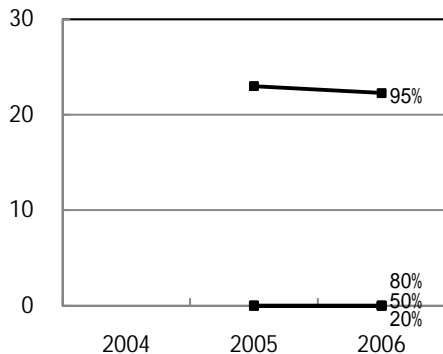


Percentile Value

W.S.	2004	2005	2006	Rem
95%		23.0	22.3	
80%		0.0	0.0	
75%		0.0	0.0	
50%		0.0	0.0	
25%		0.0	0.0	
20%		0.0	0.0	
5%		0.0	0.0	



Tendency of past 3 years



Percentile Value

B.W.S.	2006	Rem
80%	16.9	
50%	0.0	