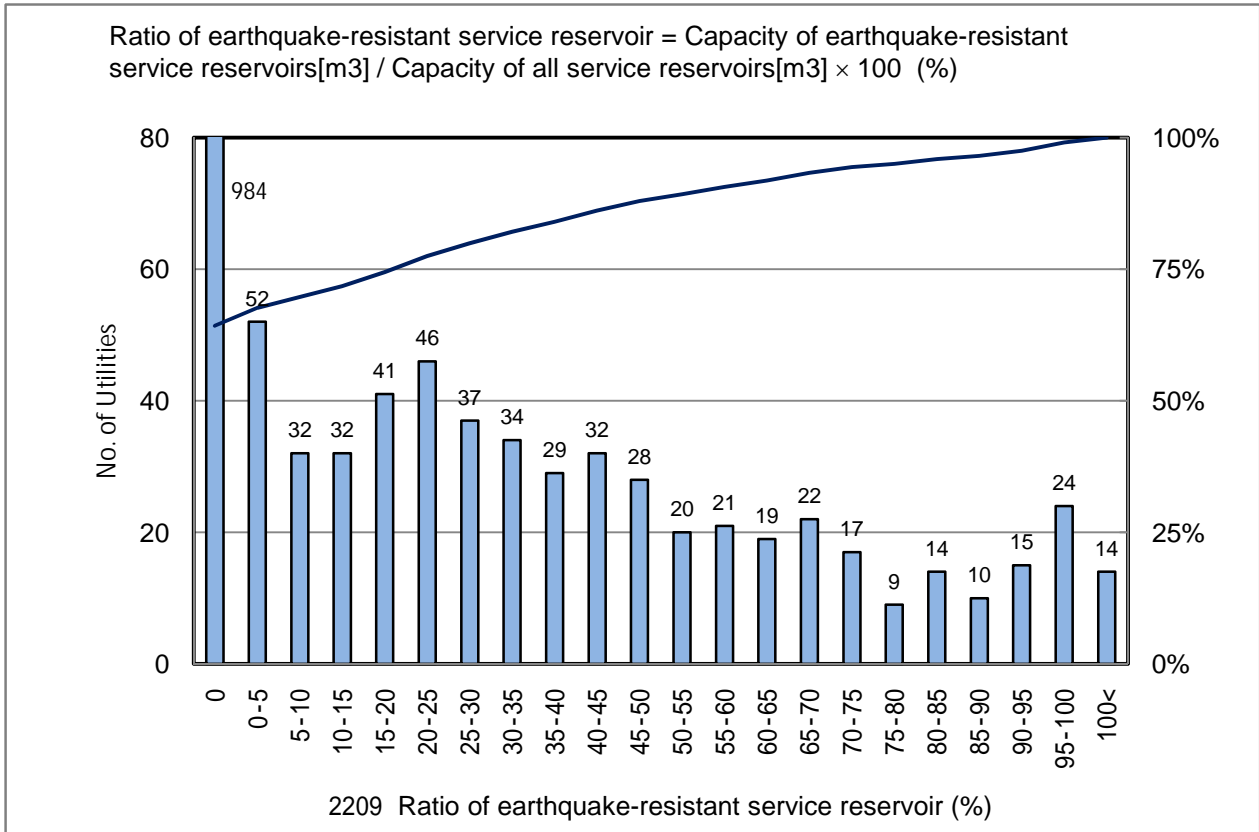


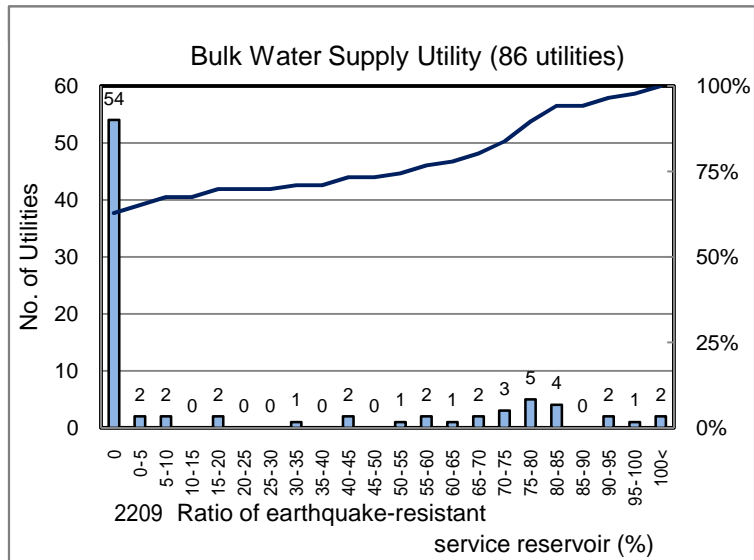
2209 Ratio of earthquake-resistant service reservoir (%)

No. of Utilities:1532

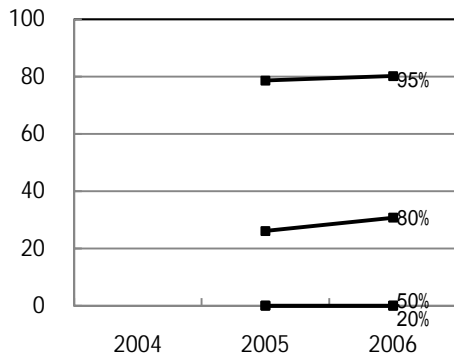


Percentile Value

W.S.	2004	2005	2006	Rem
95%		78.6	80.2	
80%		26.1	30.7	
75%		16.1	20.8	
50%		0.0	0.0	
25%		0.0	0.0	
20%		0.0	0.0	
5%		0.0	0.0	



Tendency of past 3 years



Percentile Value

B.W.S.	2006	Rem
80%	69.4	
50%	0.0	