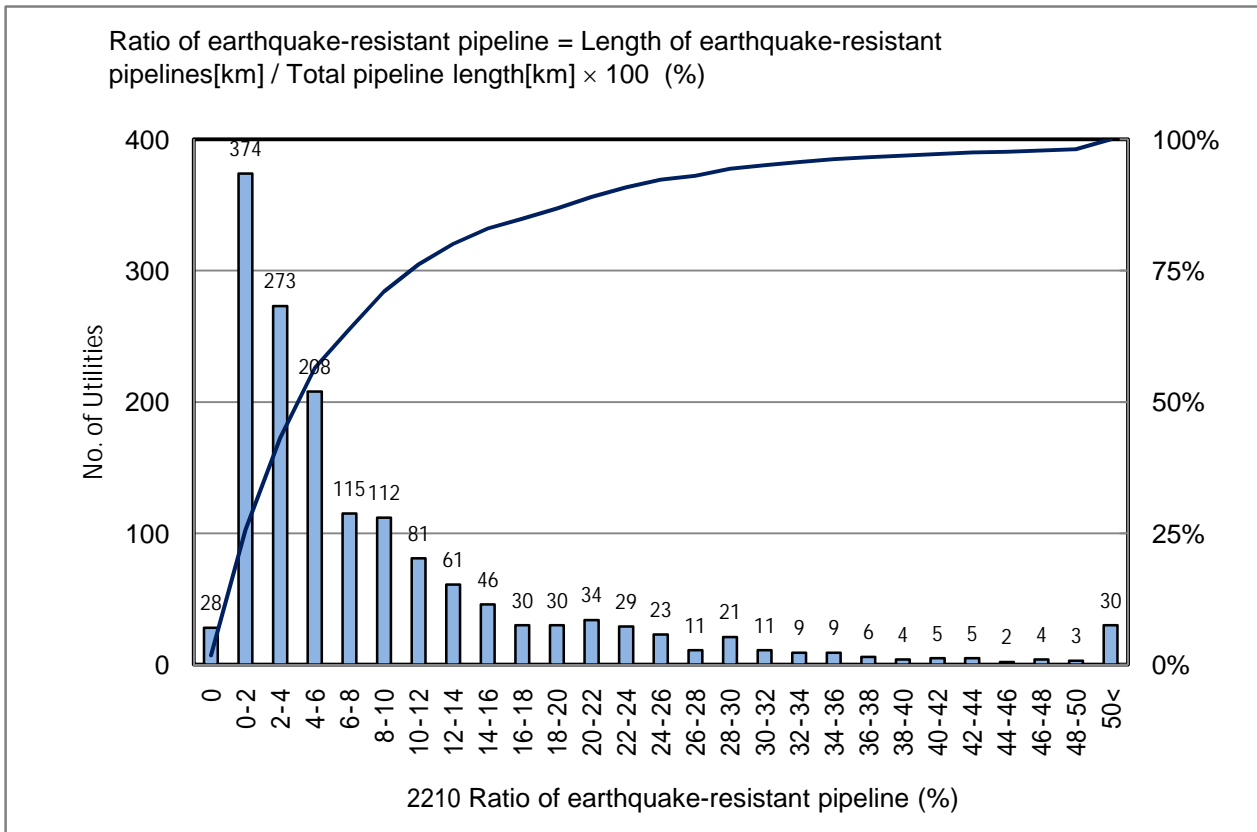


2210 Ratio of earthquake-resistant pipeline (%)

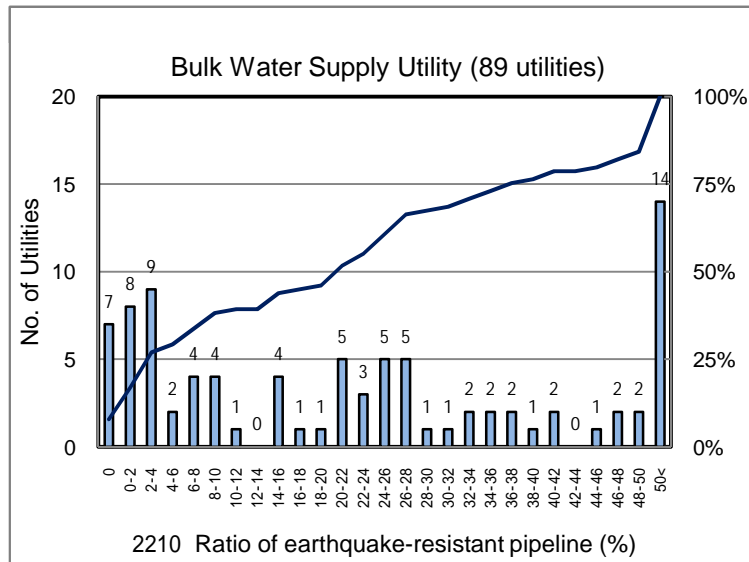
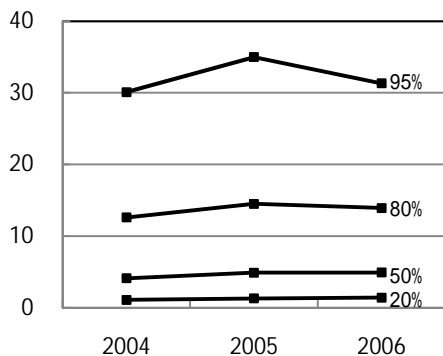
No. of Utilities:1564



Percentile Value

W.S.	2004	2005	2006	Rem
95%	30.1	35.0	31.3	
80%	12.6	14.5	13.9	
75%	10.3	11.6	11.5	
50%	4.1	4.9	4.9	
25%	1.5	1.8	2.0	
20%	1.1	1.3	1.4	
5%	0.2	0.2	0.3	

Tendency of past 3 years



Percentile Value

B.W.S.	2006	Rem
80%	45.2	
50%	20.8	