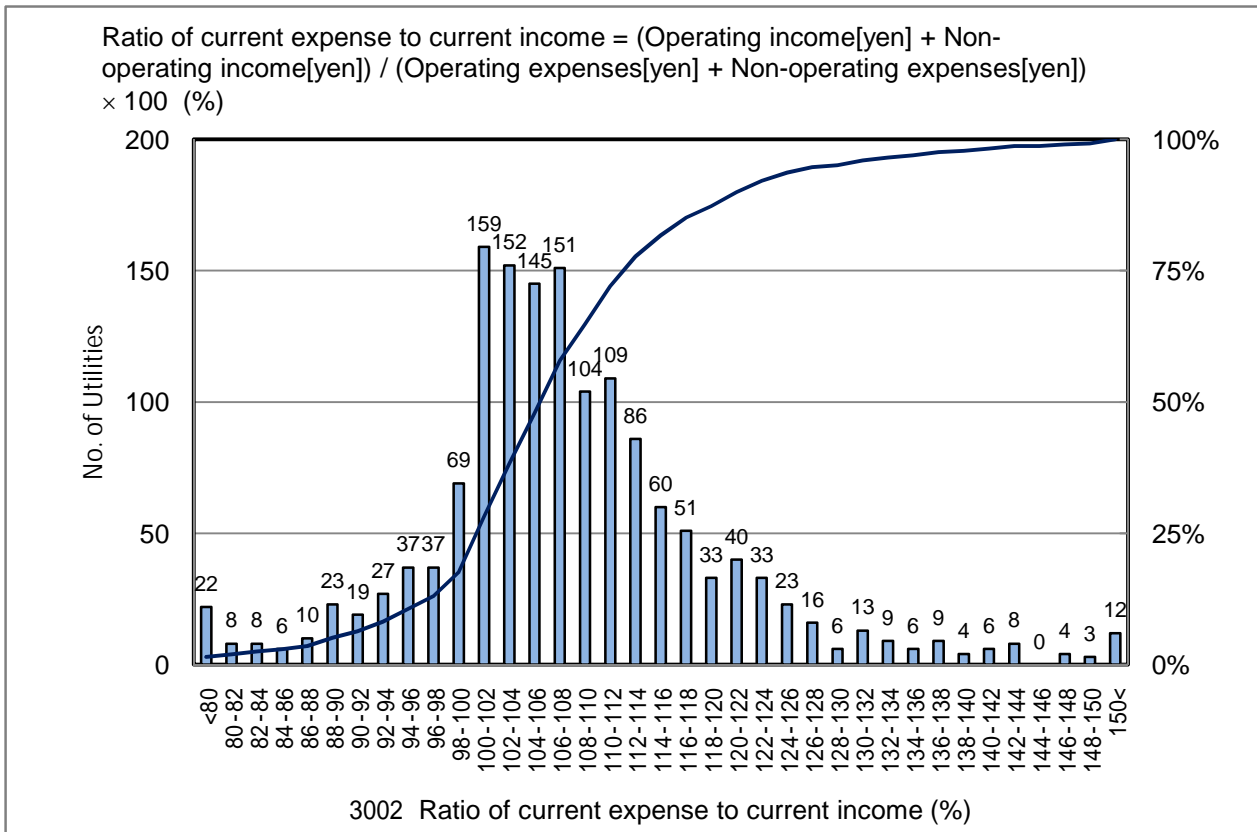


3002 Ratio of current expense to current income (%)

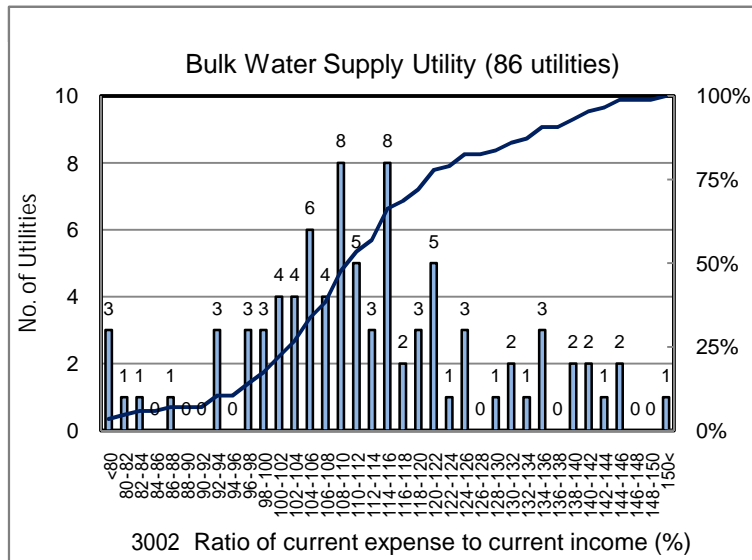
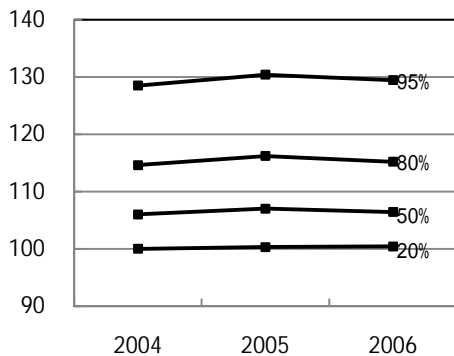
No. of Utilities:1508



Percentile Value

W.S.	2004	2005	2006	Rem
95%	128.5	130.4	129.4	
80%	114.6	116.2	115.2	
75%	112.4	113.8	113.2	
50%	106.0	107.0	106.4	
25%	101.0	101.3	101.4	
20%	100.0	100.3	100.4	
5%	89.3	91.0	89.8	

Tendency of past 3 years



Percentile Value

B.W.S.	2006	Rem
80%	124.6	
50%	110.4	