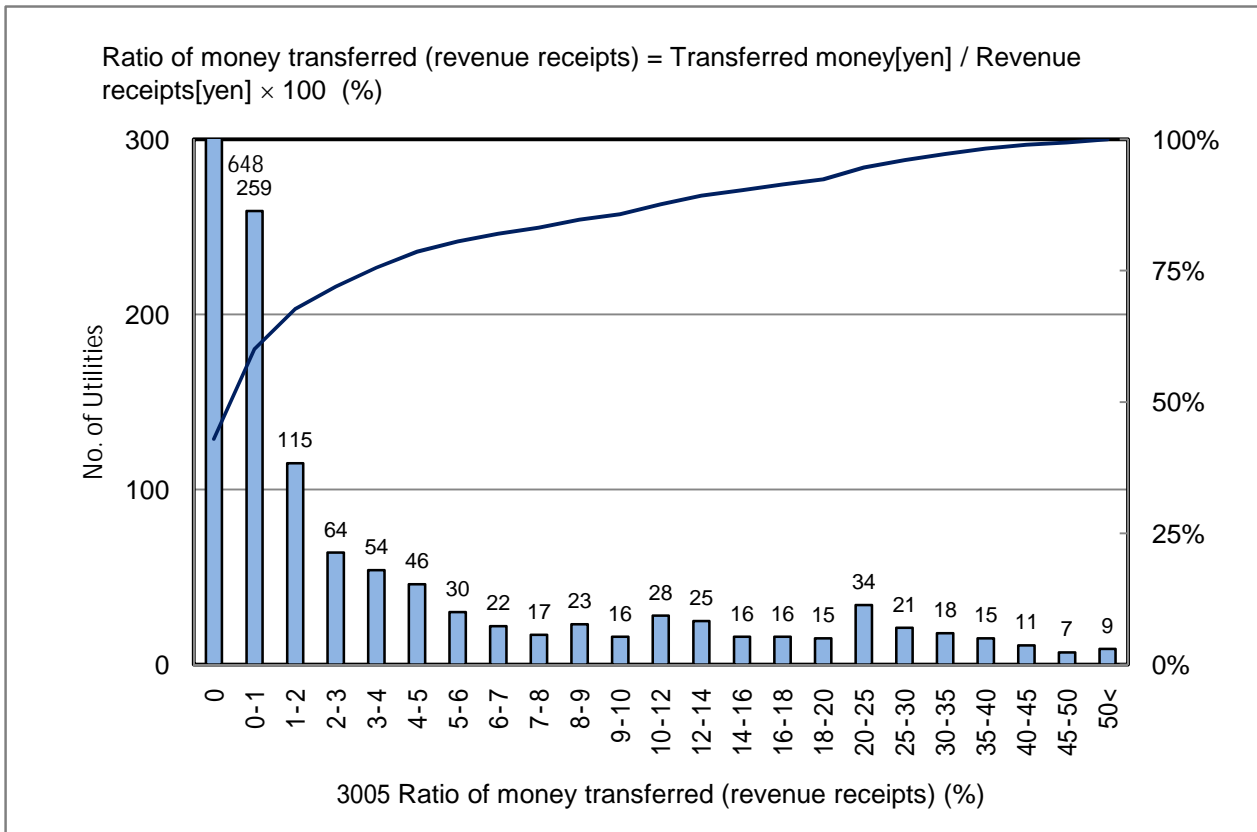


# 3005 Ratio of money transferred (revenue receipts) (%)

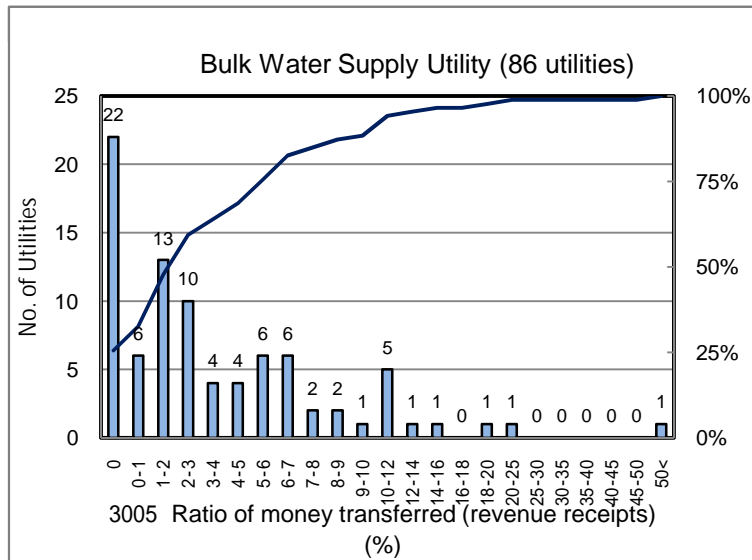
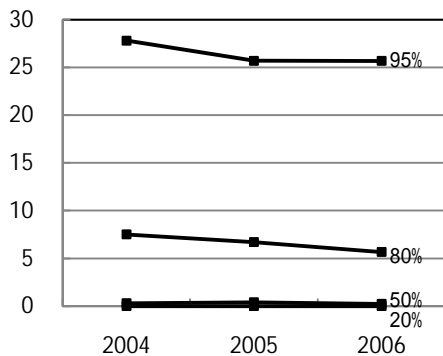
No. of Utilities:1509



Percentile Value

W.S.	2004	2005	2006	Rem
95%	27.8	25.7	25.7	
80%	7.5	6.7	5.7	
75%	5.2	4.7	3.8	
50%	0.3	0.4	0.2	
25%	0.0	0.0	0.0	
20%	0.0	0.0	0.0	
5%	0.0	0.0	0.0	

Tendency of past 3 years



Percentile Value

B.W.S.	2006	Rem
80%	6.7	
50%	2.3	