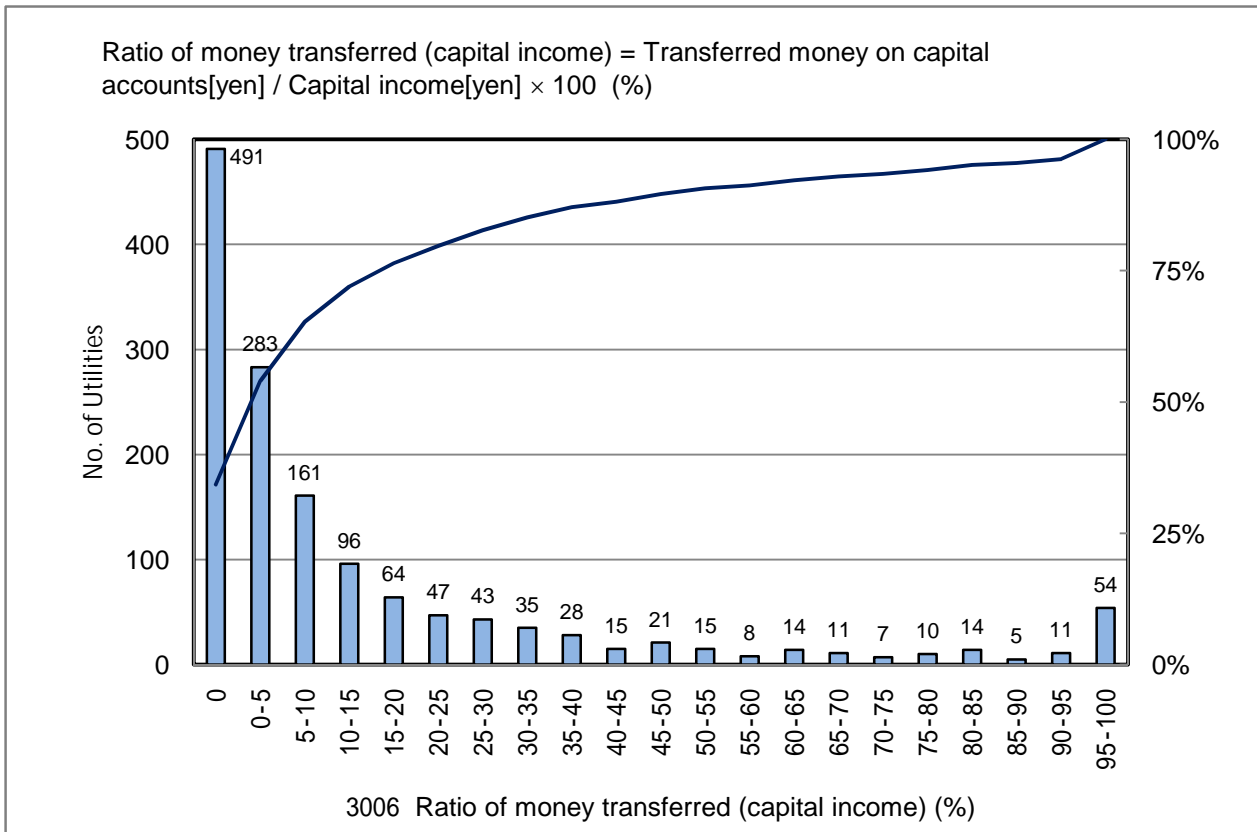


3006 Ratio of money transferred (capital income) (%)

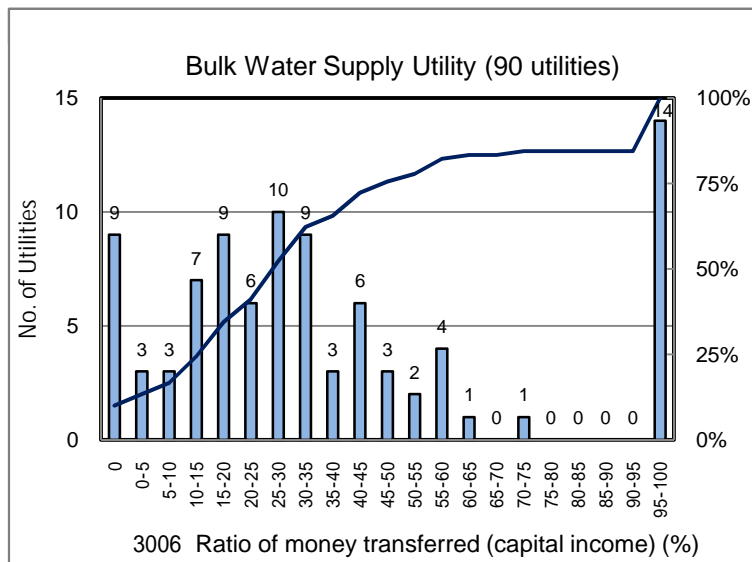
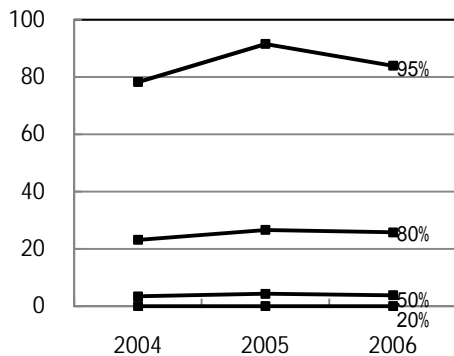
No. of Utilities:1433



Percentile Value

W.S.	2004	2005	2006	Rem
95%	78.2	91.5	83.9	
80%	23.1	26.6	25.7	
75%	17.2	20.4	18.4	
50%	3.4	4.3	3.8	
25%	0.0	0.0	0.0	
20%	0.0	0.0	0.0	
5%	0.0	0.0	0.0	

Tendency of past 3 years



Percentile Value

B.W.S.	2006	Rem
80%	57.7	
50%	29.0	