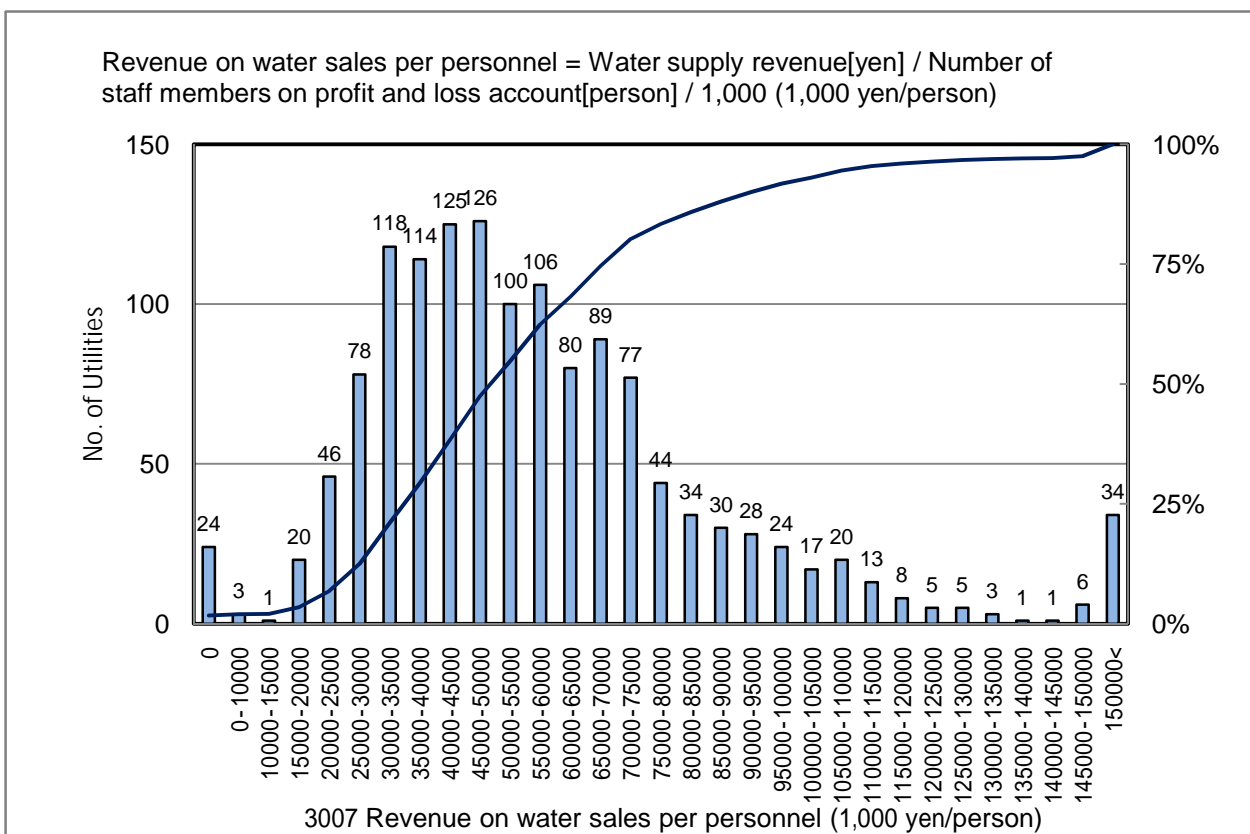


3007 Revenue on water sales per personnel (1,000 yen/person)

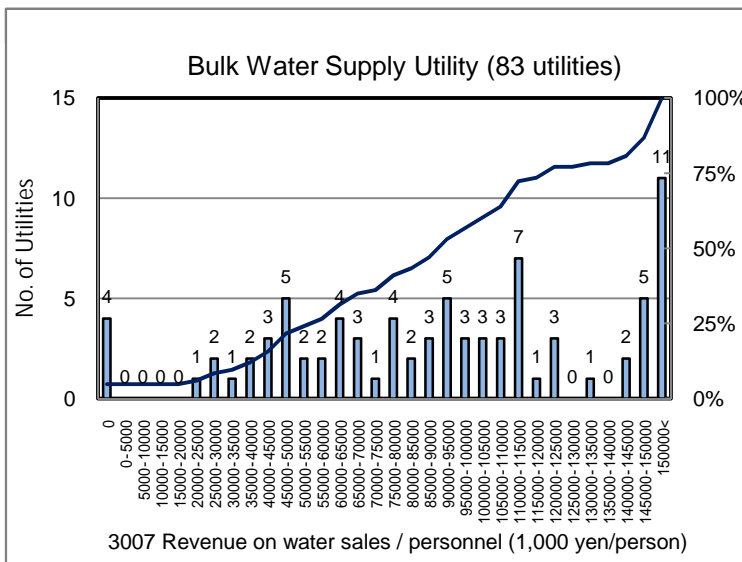
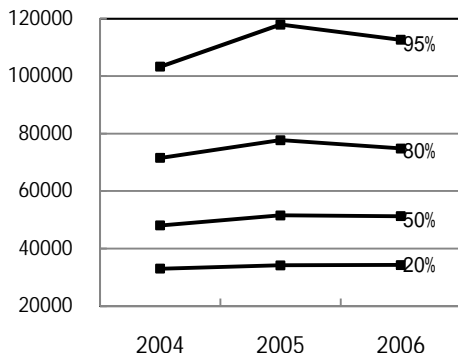
No. of Utilities:1380



Percentile Value

W.S.	2004	2005	2006	Rem
95%	103,250	117,943	112,642	
80%	71,568	77,726	74,825	
75%	65,774	71,904	70,233	
50%	48,032	51,541	51,253	
25%	35,601	36,951	37,105	
20%	33,007	34,166	34,282	
5%	22,849	21,716	22,887	

Tendency of past 3 years



Percentile Value

B.W.S.	2006	Rem
80%	141,365	
50%	93,653	