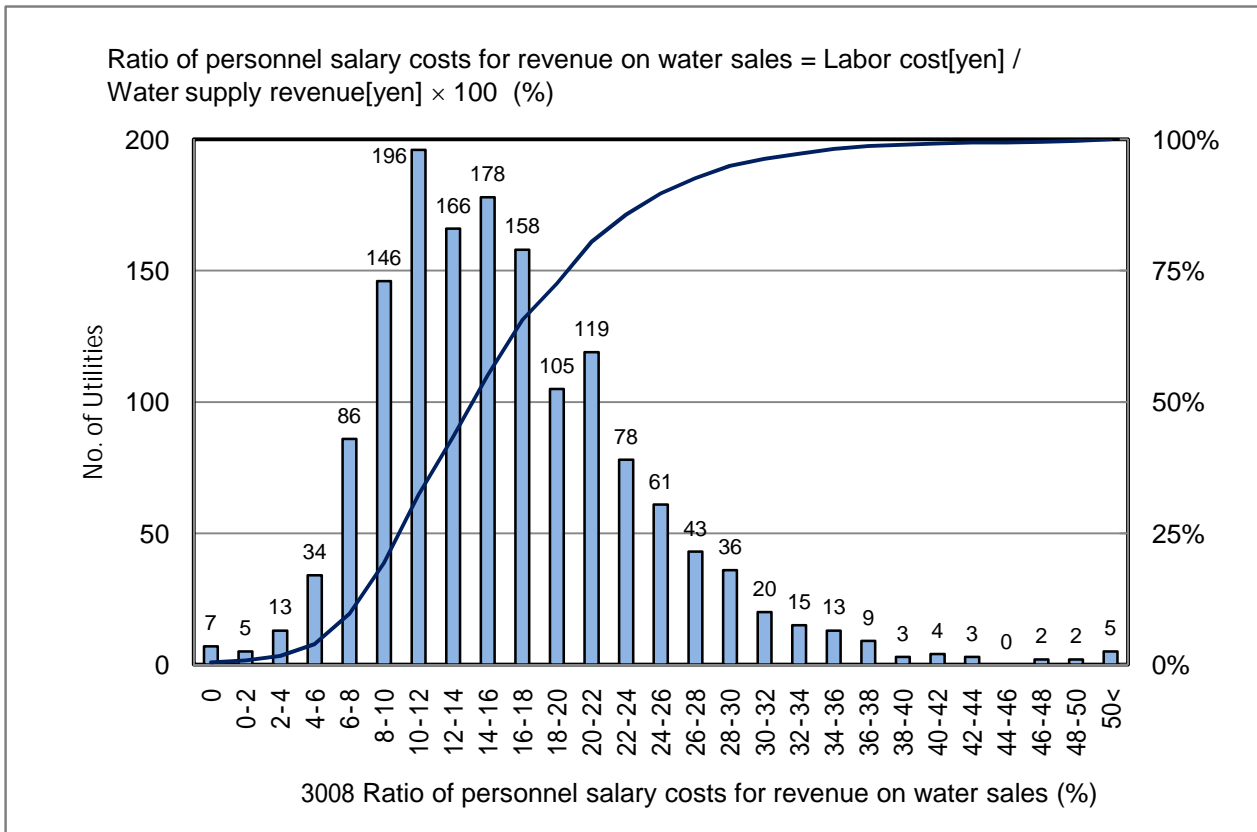


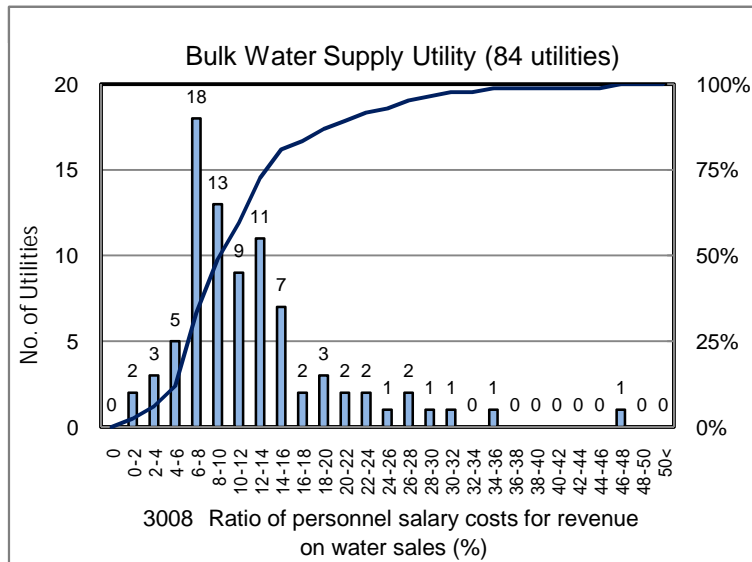
3008 Ratio of personnel salary costs for revenue on water sales (%)

No. of Utilities:1507

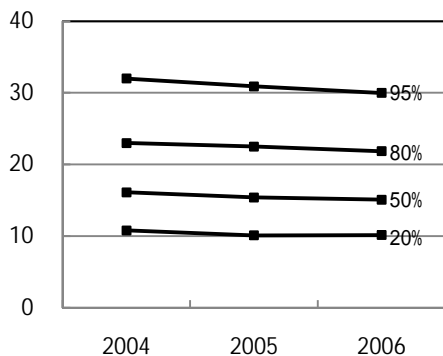


Percentile Value

W.S.	2004	2005	2006	Rem
95%	32.0	30.9	30.0	
80%	23.0	22.5	21.9	
75%	21.8	20.7	20.6	
50%	16.1	15.4	15.1	
25%	11.8	11.0	10.9	
20%	10.8	10.1	10.2	
5%	7.4	6.9	6.6	



Tendency of past 3 years



Percentile Value

B.W.S.	2006	Rem
80%	15.1	
50%	10.2	