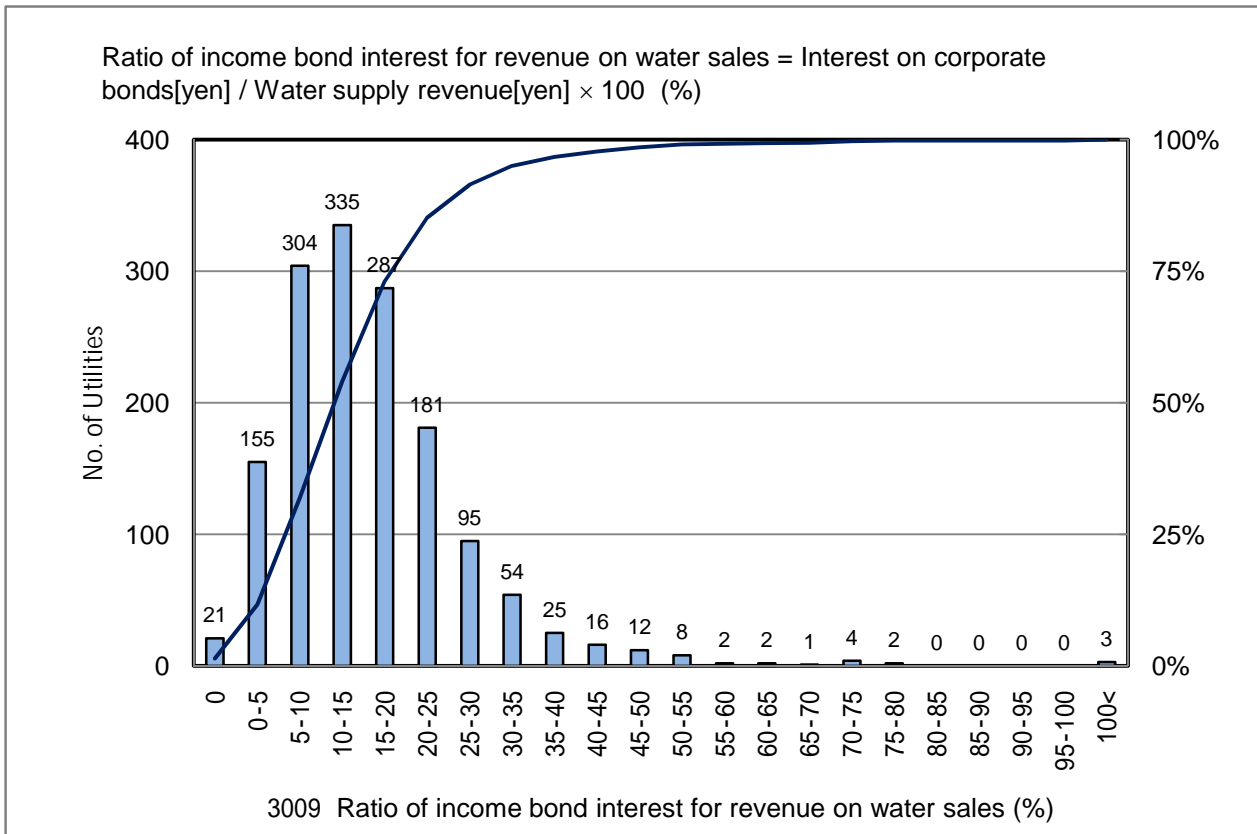


3009 Ratio of income bond interest for revenue on water sales (%)

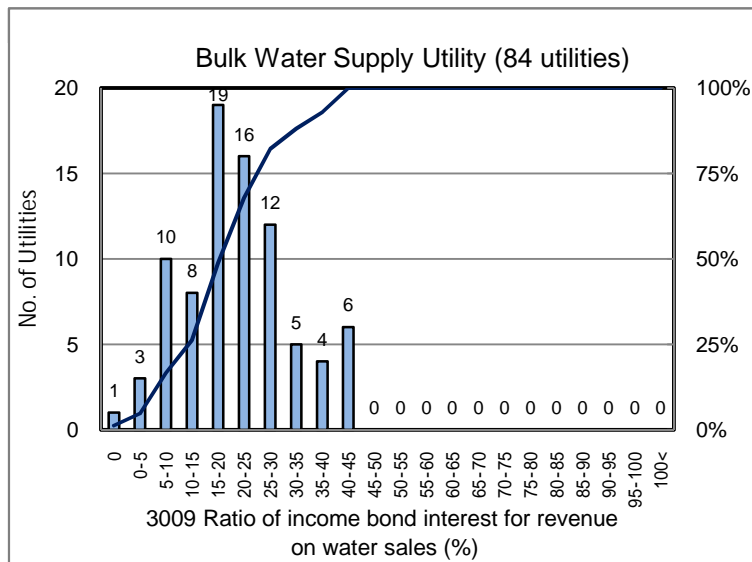
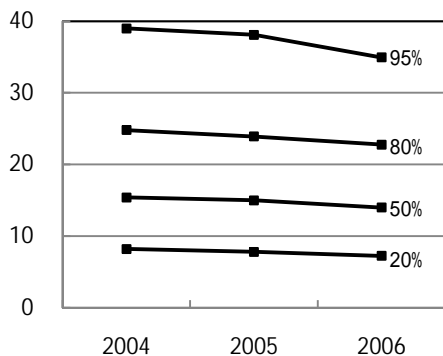
No. of Utilities:1507



Percentile Value

W.S.	2004	2005	2006	Rem
95%	39.0	38.1	35.0	
80%	24.8	23.9	22.8	
75%	22.8	22.2	20.8	
50%	15.4	15.0	14.0	
25%	9.5	9.1	8.5	
20%	8.2	7.8	7.2	
5%	3.2	2.7	2.2	

Tendency of past 3 years



Percentile Value

B.W.S.	2006	Rem
80%	28.9	
50%	20.1	