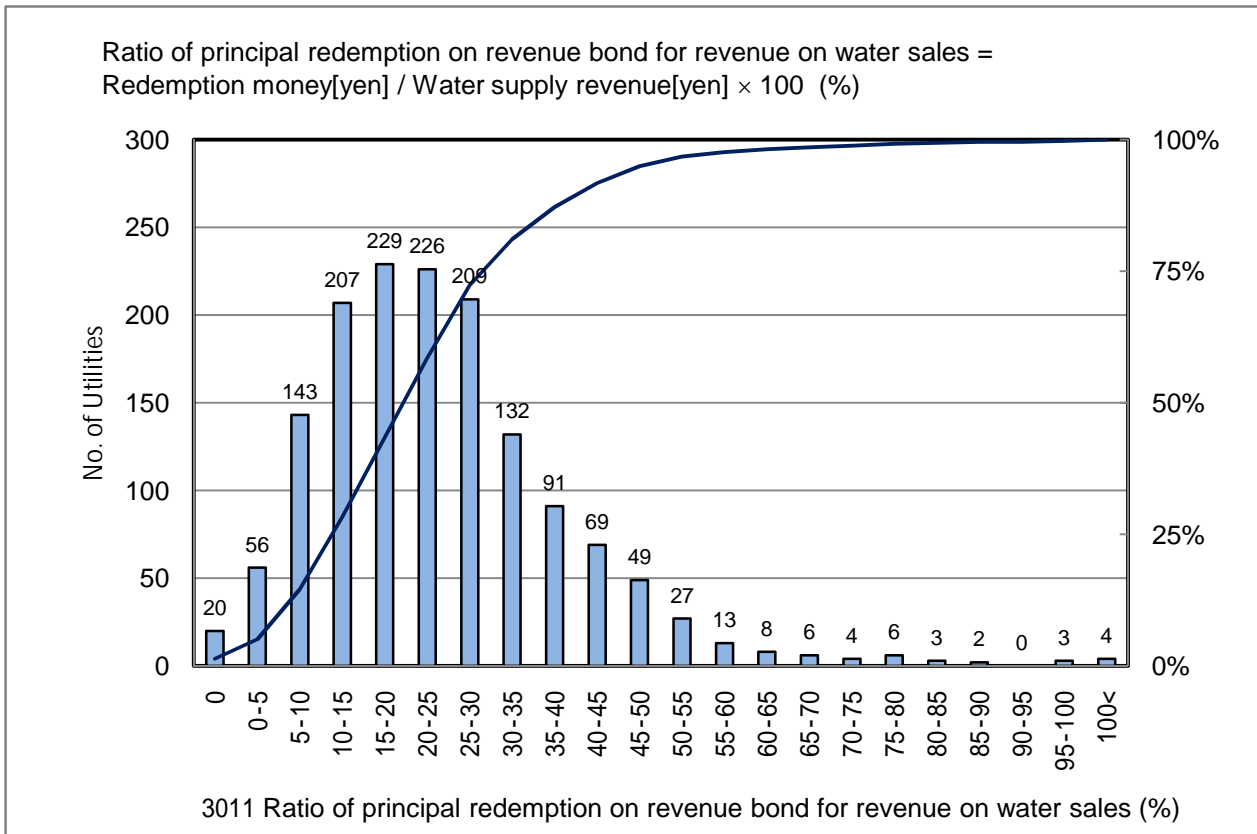


3011 Ratio of principal redemption on revenue bond for revenue on water sales (%)

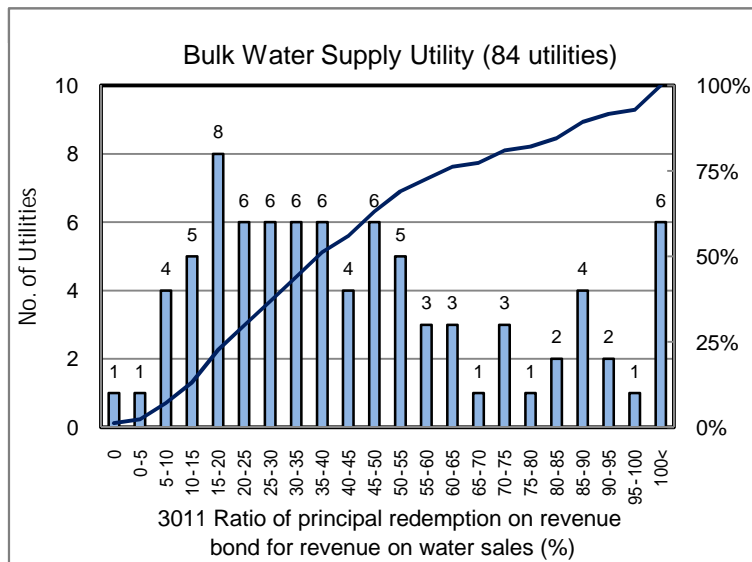
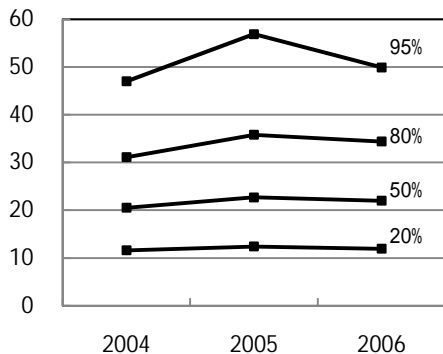
No. of Utilities:1507



Percentile Value

W.S.	2004	2005	2006	Rem
95%	47.0	56.9	49.9	
80%	31.1	35.8	34.4	
75%	28.5	32.1	31.5	
50%	20.5	22.7	22.0	
25%	13.4	14.7	14.0	
20%	11.6	12.4	11.9	
5%	5.1	5.9	5.0	

Tendency of past 3 years



Percentile Value

B.W.S.	2006	Rem
80%	72.9	
50%	39.5	