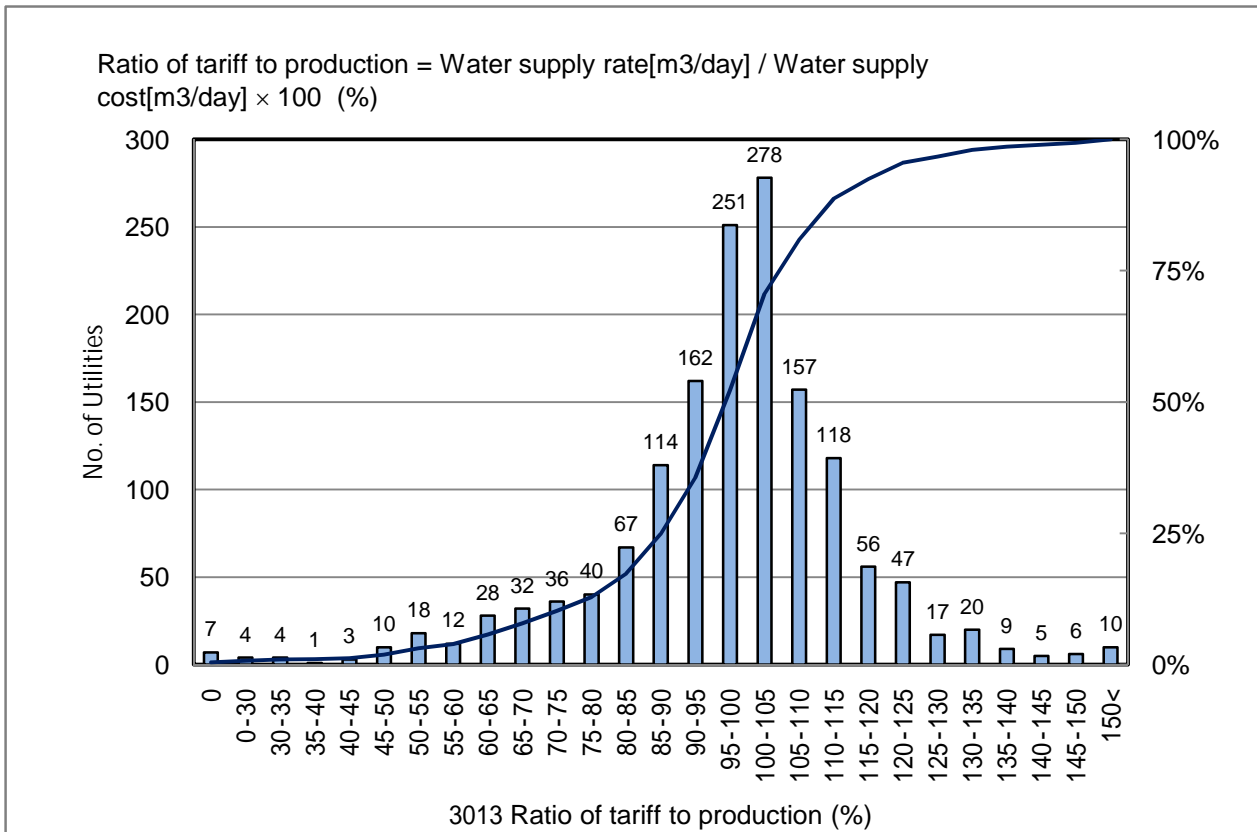


# 3013 Ratio of tariff to production (%)

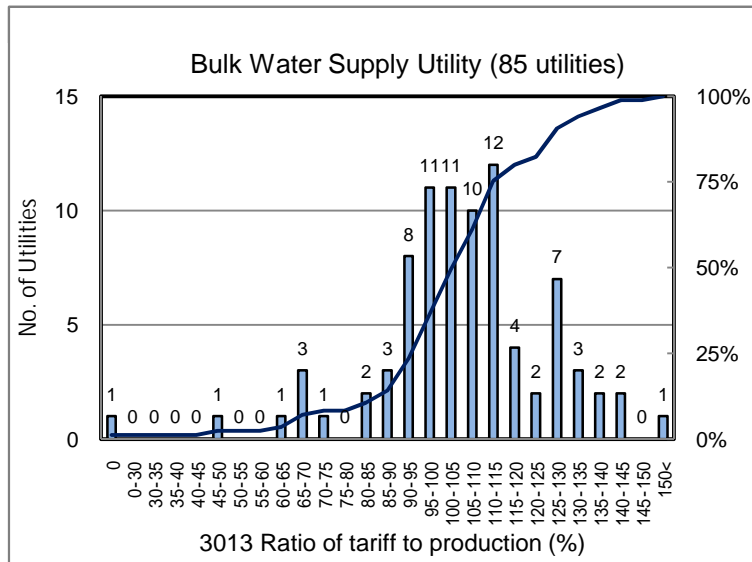
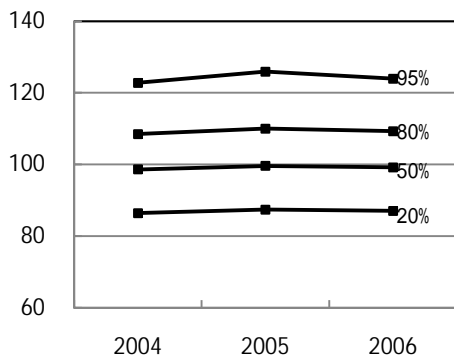
No. of Utilities:1512



Percentile Value

W.S.	2004	2005	2006	Rem
95%	122.8	125.9	123.9	
80%	108.5	110.0	109.3	
75%	106.5	107.8	106.5	
50%	98.6	99.6	99.2	
25%	89.4	90.3	90.1	
20%	86.4	87.4	87.0	
5%	64.2	64.3	63.7	

Tendency of past 3 years



Percentile Value

B.W.S.	2006	Rem
80%	118.0	
50%	105.4	