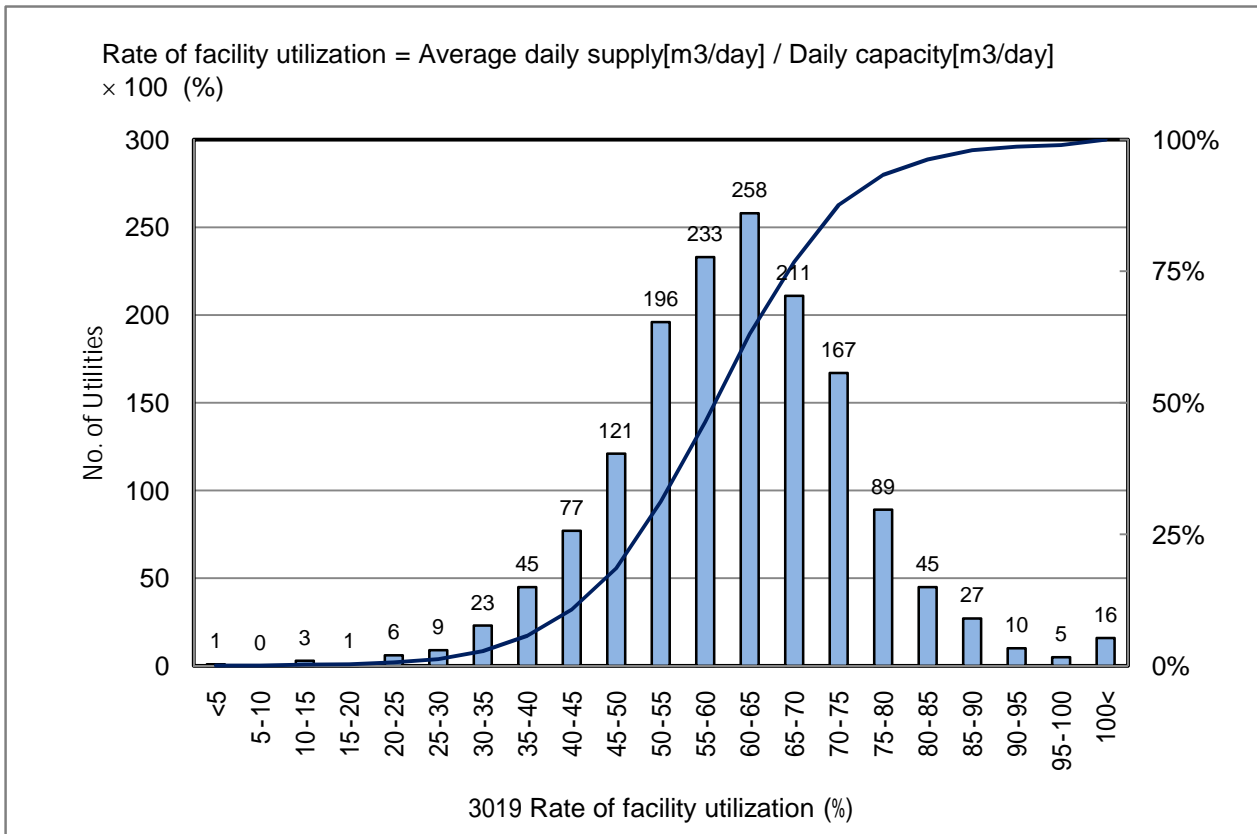


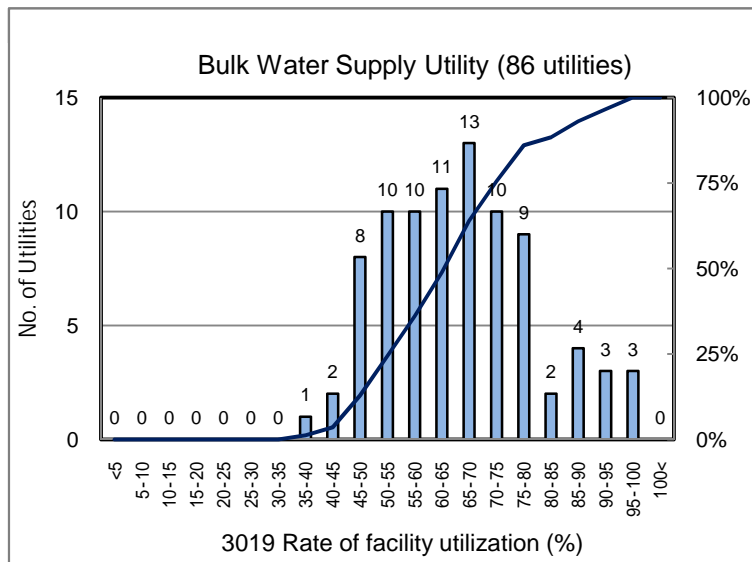
# 3019 Rate of facility utilization (%)

No. of Utilities:1543

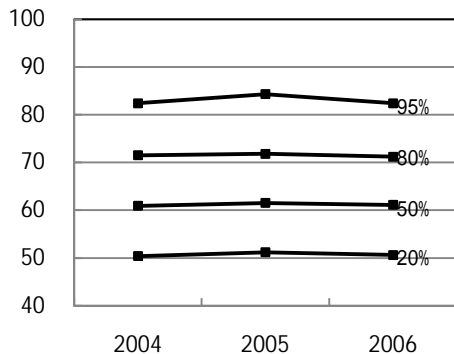


## Percentile Value

W.S.	2004	2005	2006	Rem
95%	82.4	84.3	82.4	
80%	71.5	71.8	71.2	
75%	69.4	69.7	69.3	
50%	60.9	61.5	61.1	
25%	52.6	53.6	52.8	
20%	50.4	51.2	50.6	
5%	39.1	39.6	39.2	



## Tendency of past 3 years



## Percentile Value

B.W.S.	2006	Rem
80%	76.2	
50%	65.1	