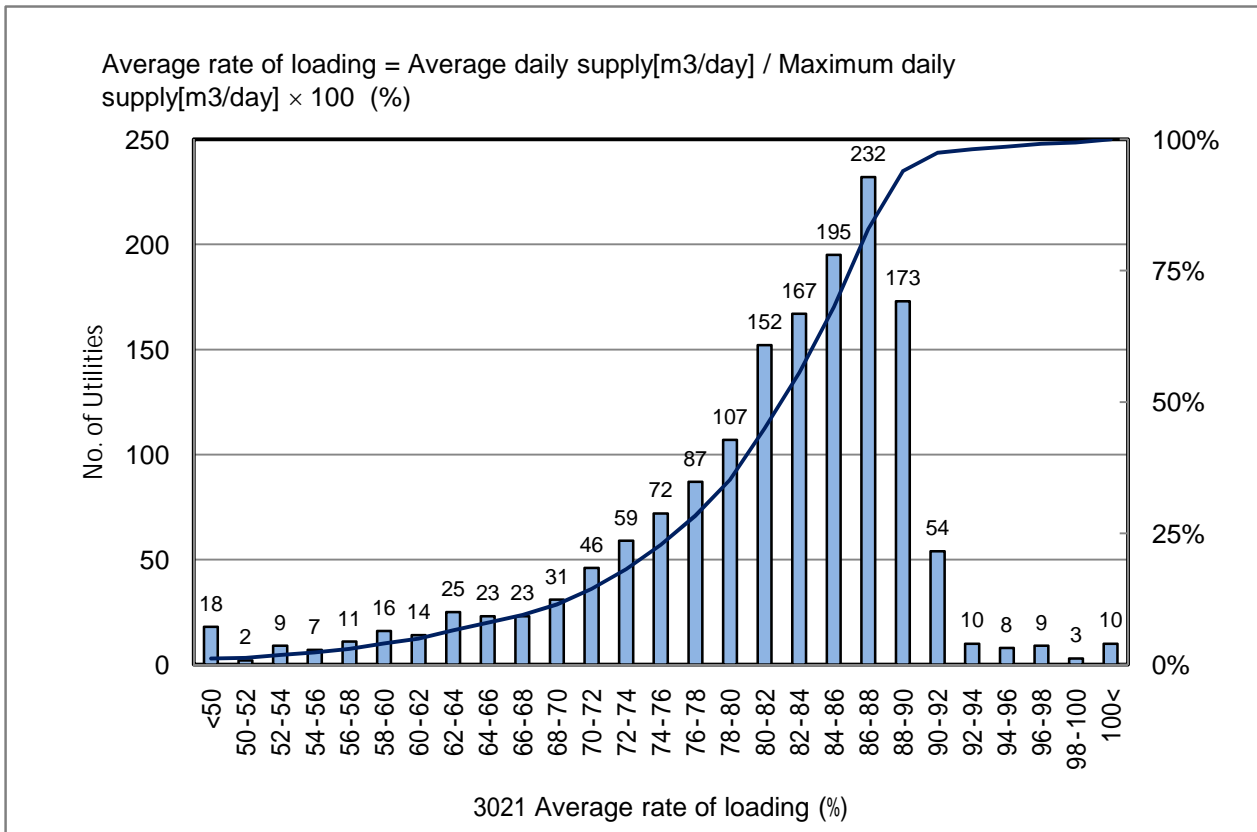


# 3021 Average rate of loading (%)

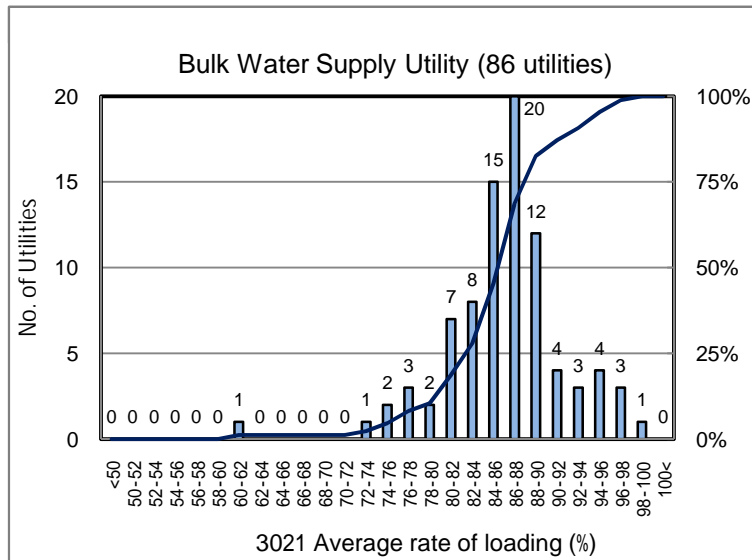
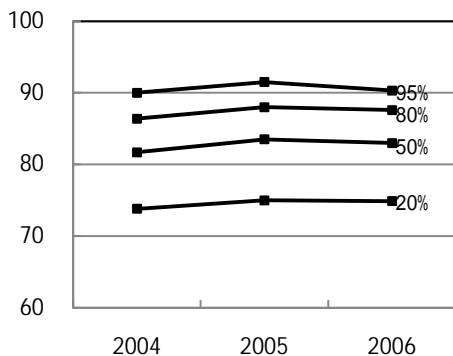
No. of Utilities:1523



Percentile Value

W.S.	2004	2005	2006	Rem
95%	90.0	91.5	90.3	
80%	86.4	88.0	87.6	
75%	85.6	87.3	86.9	
50%	81.7	83.5	83.0	
25%	75.6	77.4	76.9	
20%	73.8	75.0	74.9	
5%	61.4	62.2	62.2	

Tendency of past 3 years



Percentile Value

B.W.S.	2006	Rem
80%	89.8	
50%	86.4	