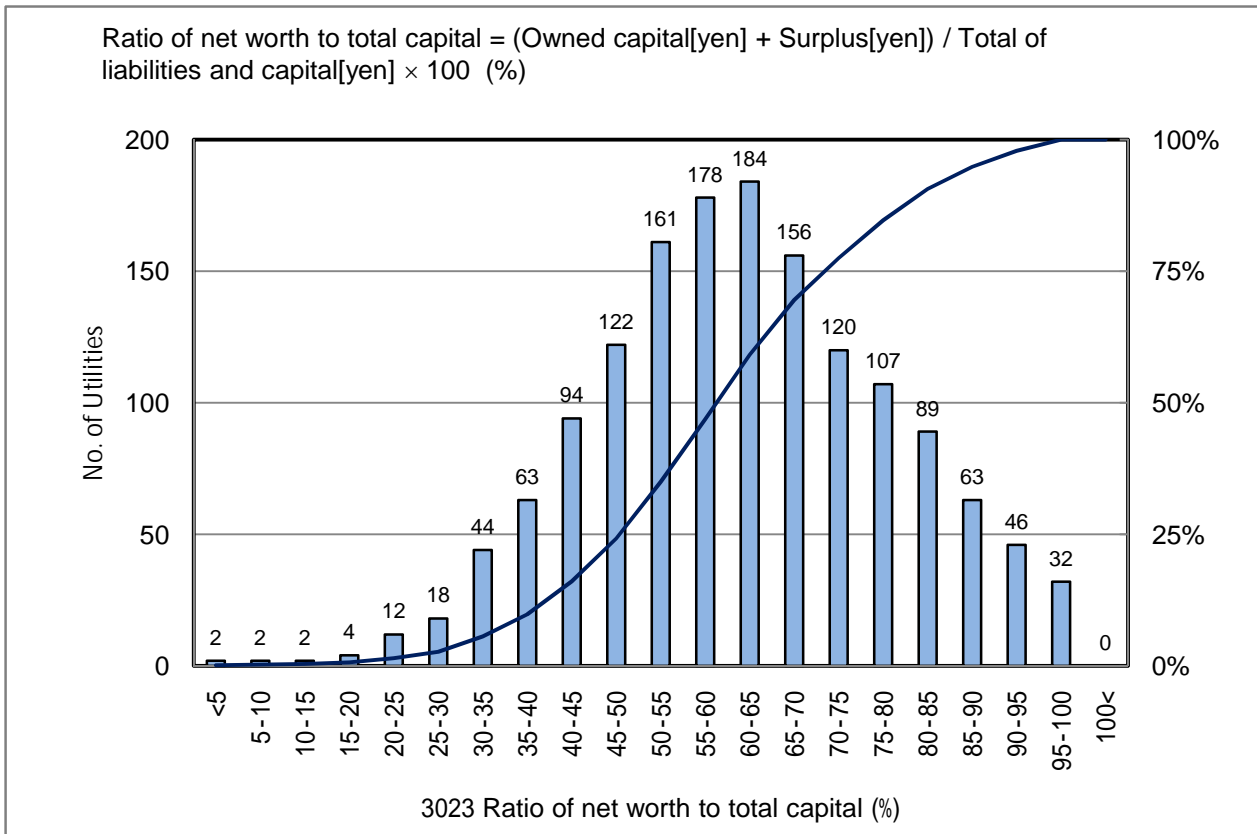


3023 Ratio of net worth to total capital (%)

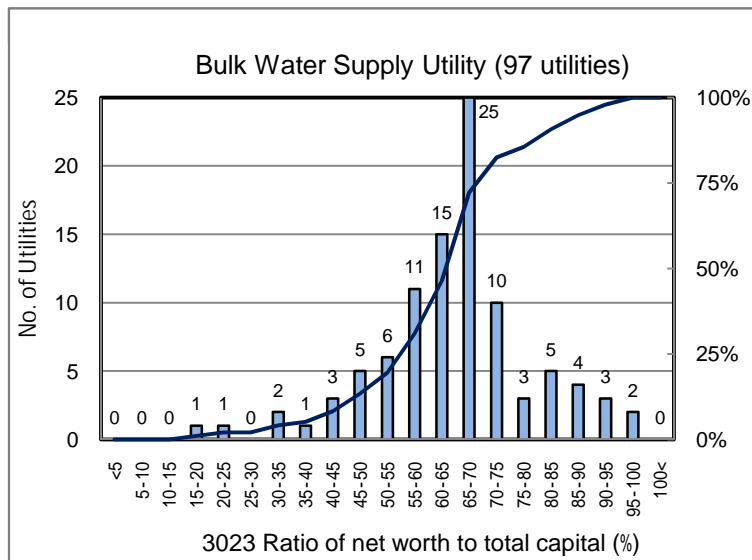
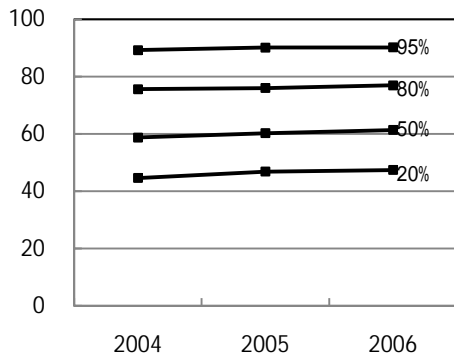
No. of Utilities:1499



Percentile Value

W.S.	2004	2005	2006	Rem
95%	89.2	90.1	90.2	
80%	75.6	76.0	76.9	
75%	72.0	72.8	73.6	
50%	58.7	60.2	61.3	
25%	47.3	49.3	50.4	
20%	44.6	46.8	47.4	
5%	31.1	32.9	34.2	

Tendency of past 3 years



Percentile Value

B.W.S.	2006	Rem
80%	73.9	
50%	65.8	