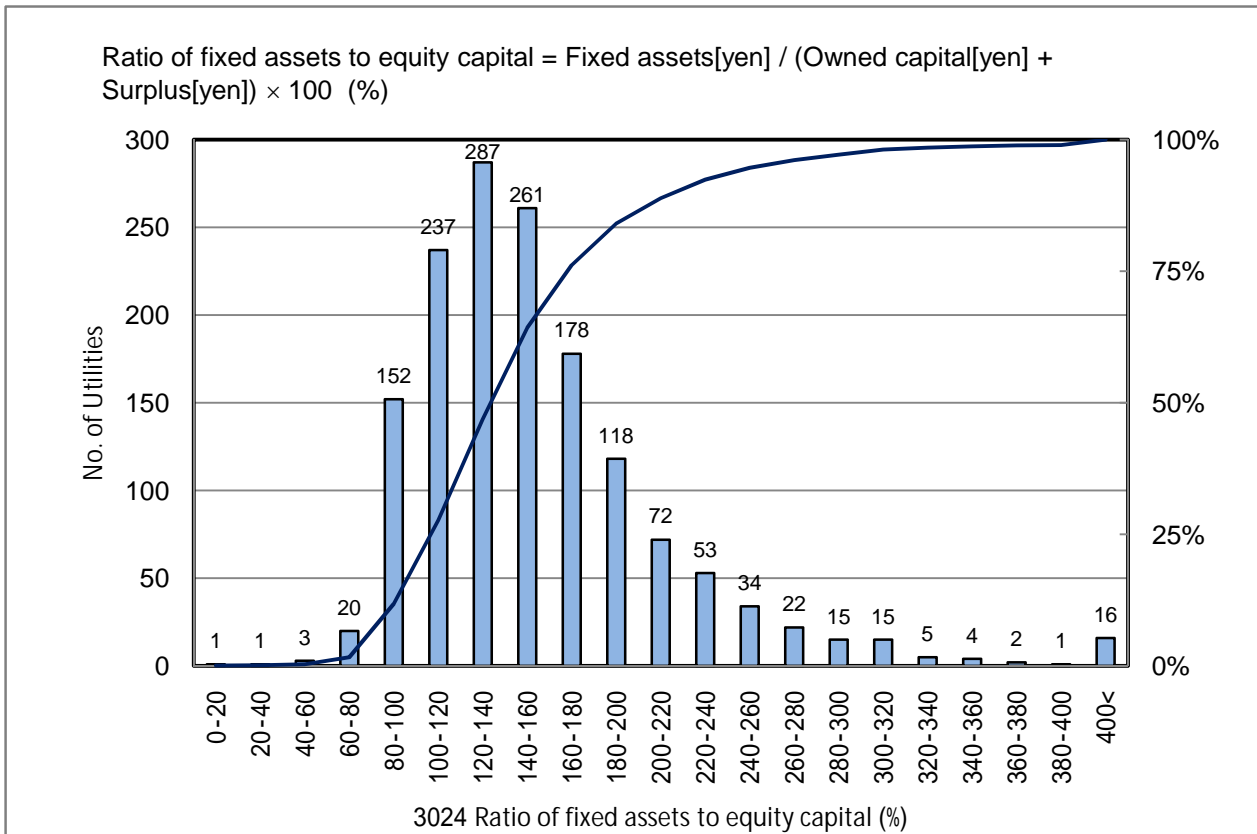


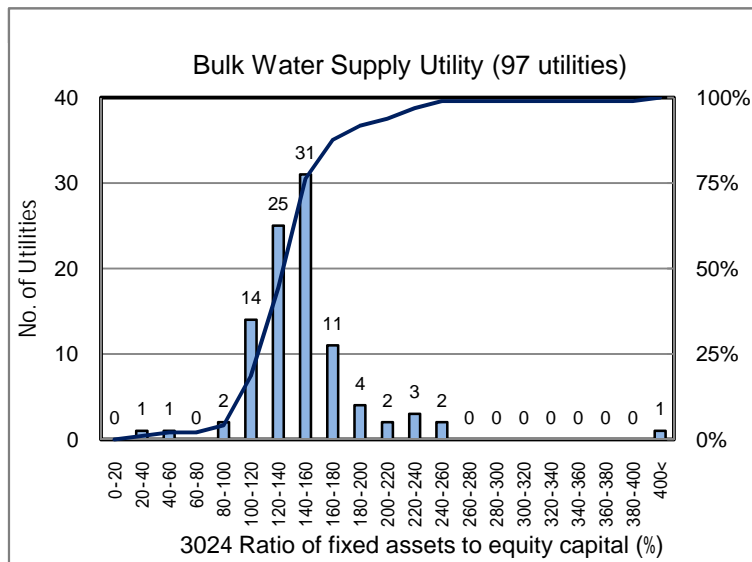
3024 Ratio of fixed assets to equity capital (%)

No. of Utilities:1497

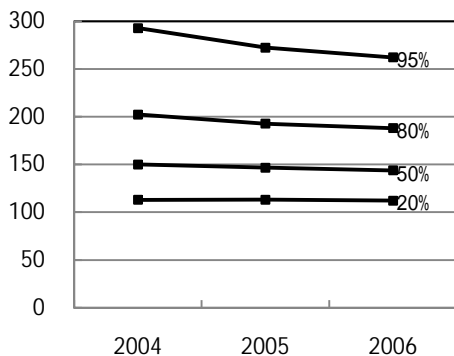


Percentile Value

W.S.	2004	2005	2006	Rem
95%	292.8	272.3	262.1	
80%	202.3	192.7	188.0	
75%	188.4	180.5	177.7	
50%	150.0	146.6	143.8	
25%	119.3	118.6	117.2	
20%	113.0	113.1	112.2	
5%	91.5	90.5	89.7	



Tendency of past 3 years



Percentile Value

B.W.S.	2006	Rem
80%	162.1	
50%	142.4	