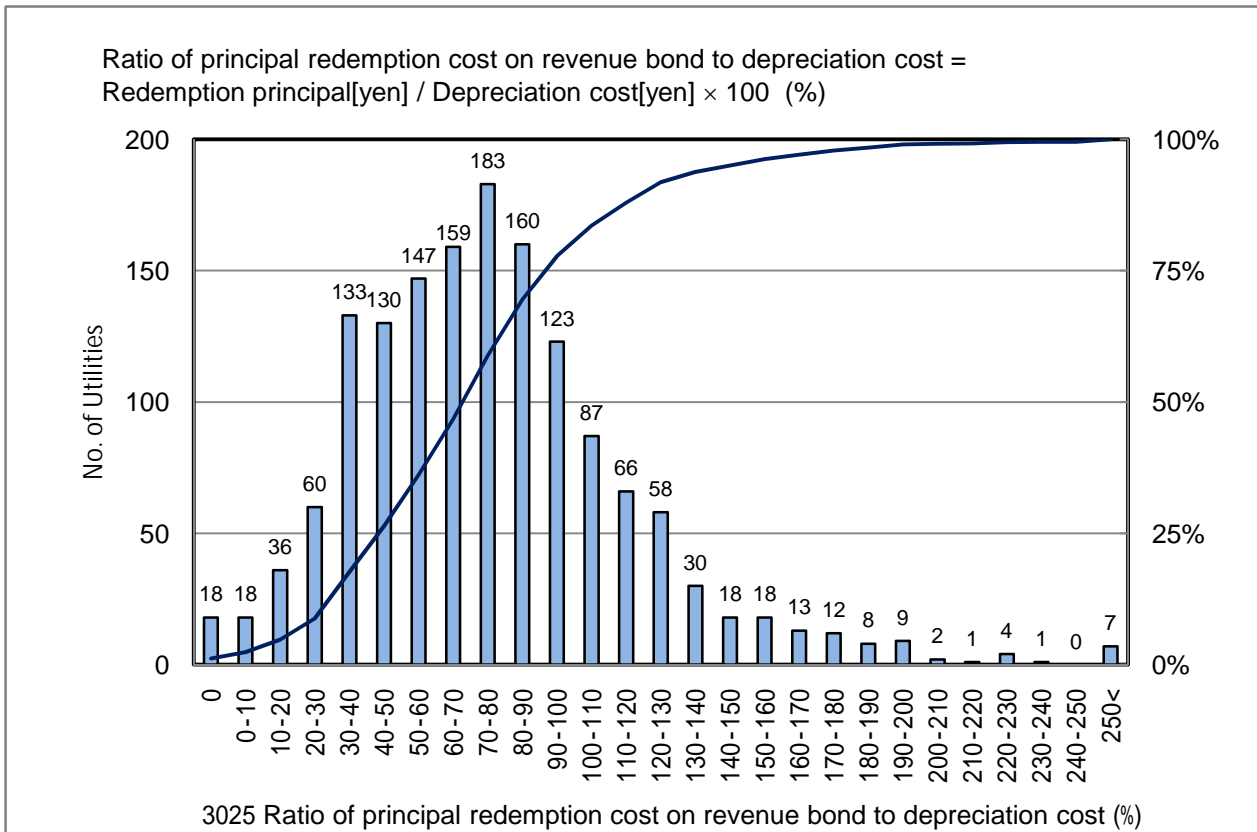


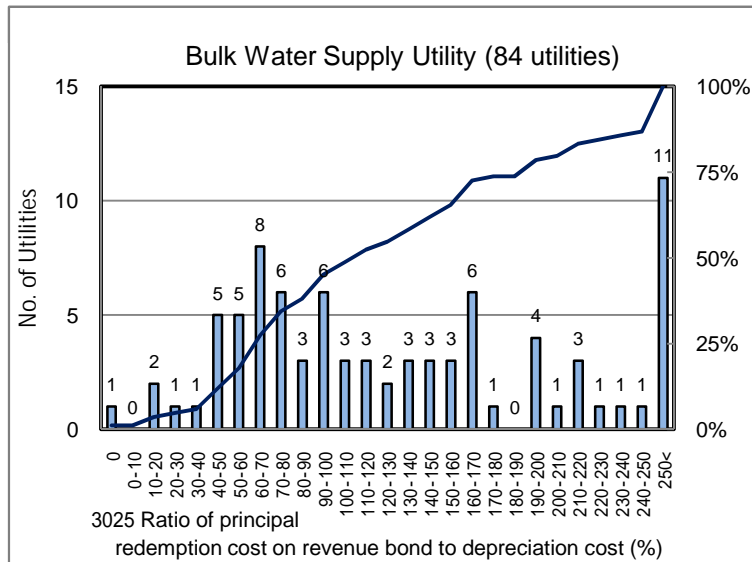
# 3025 Ratio of principal redemption cost on revenue bond to depreciation cost (%)

No. of Utilities:1501

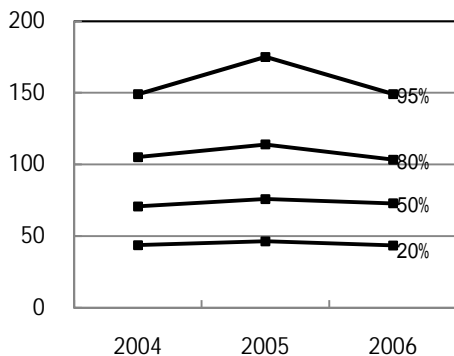


Percentile Value

W.S.	2004	2005	2006	Rem
95%	149.0	175.1	149.1	
80%	105.1	114.0	103.3	
75%	96.0	103.3	96.3	
50%	70.7	75.9	72.9	
25%	48.7	51.9	49.2	
20%	43.7	46.3	43.5	
5%	22.4	23.0	20.3	



Tendency of past 3 years



Percentile Value

B.W.S.	2006	Rem
80%	208.0	
50%	112.5	