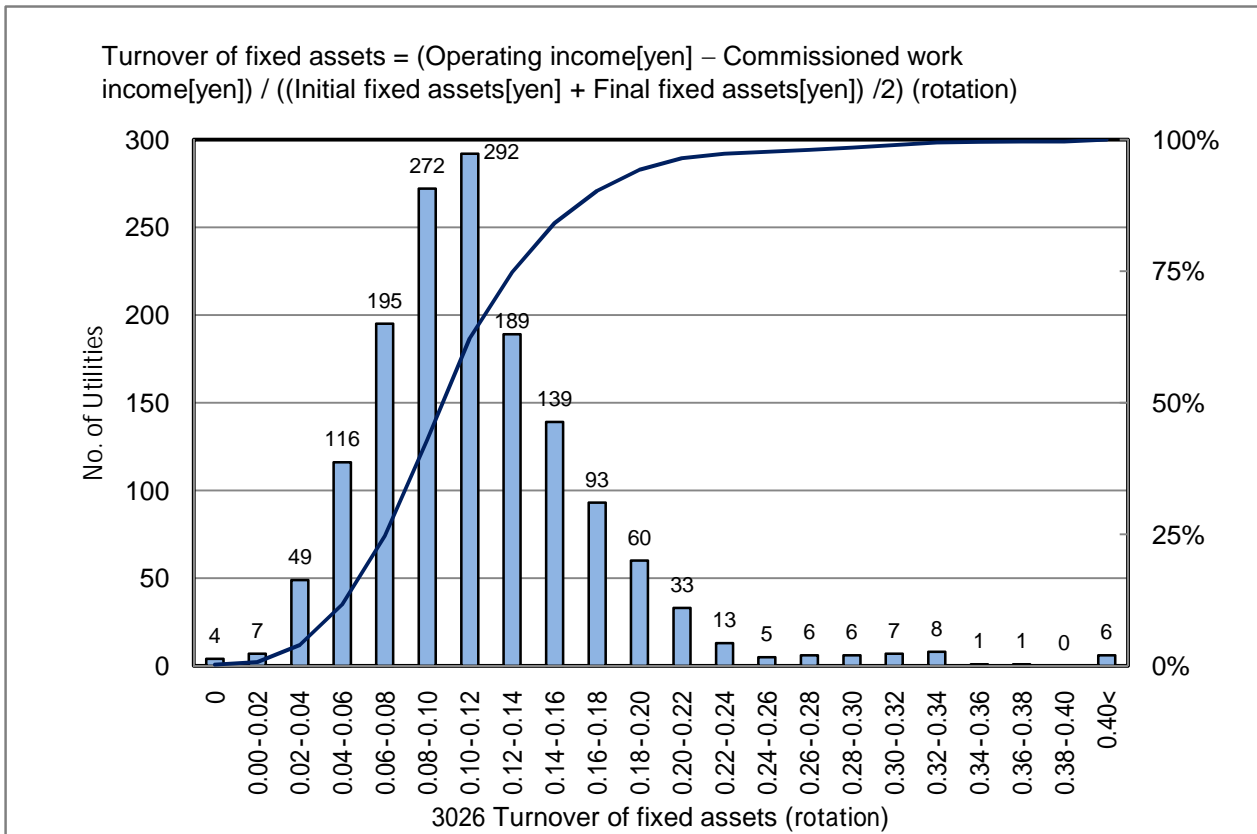


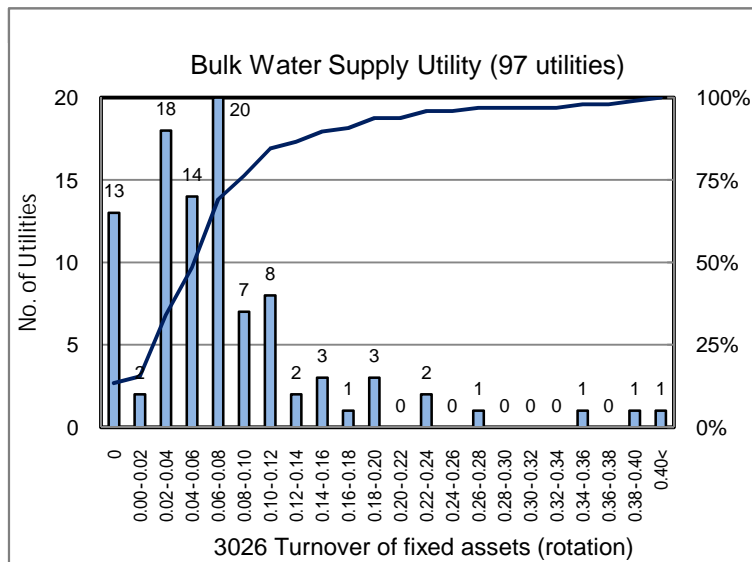
# 3026 Turnover of fixed assets (rotation)

No. of Utilities:1502

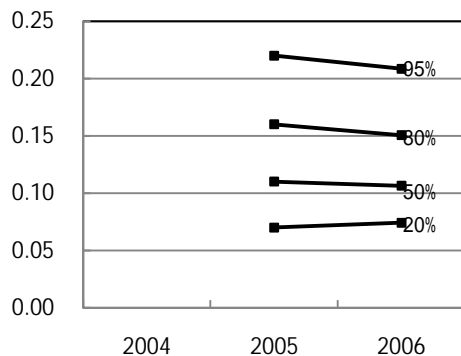


## Percentile Value

W.S.	2004	2005	2006	Rem
95%		0.22	0.21	
80%		0.16	0.15	
75%		0.14	0.14	
50%		0.11	0.11	
25%		0.08	0.08	
20%		0.07	0.07	
5%		0.03	0.04	



## Tendency of past 3 years



## Percentile Value

B.W.S.	2006	Rem
80%	0.10	
50%	0.06	