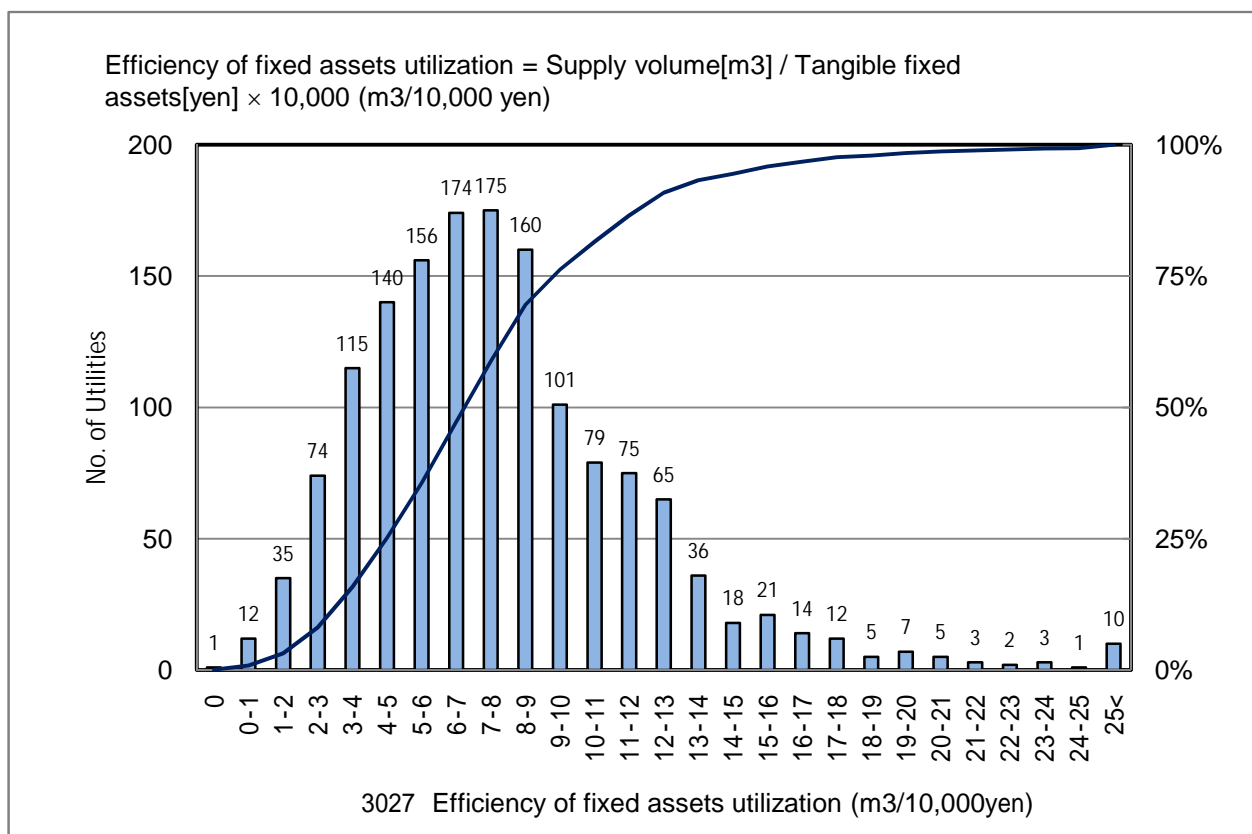


3027 Efficiency of fixed assets utilization (m3/10,000yen)

No. of Utilities:1499



Percentile Value

W.S.	2004	2005	2006	Rem
95%	16.3	15.6	15.3	
80%	11.1	10.7	10.7	
75%	10.2	9.8	9.9	
50%	7.4	7.1	7.3	
25%	5.1	4.6	5.0	
20%	4.6	3.9	4.5	
5%	2.5	0.0	2.4	

Tendency of past 3 years

