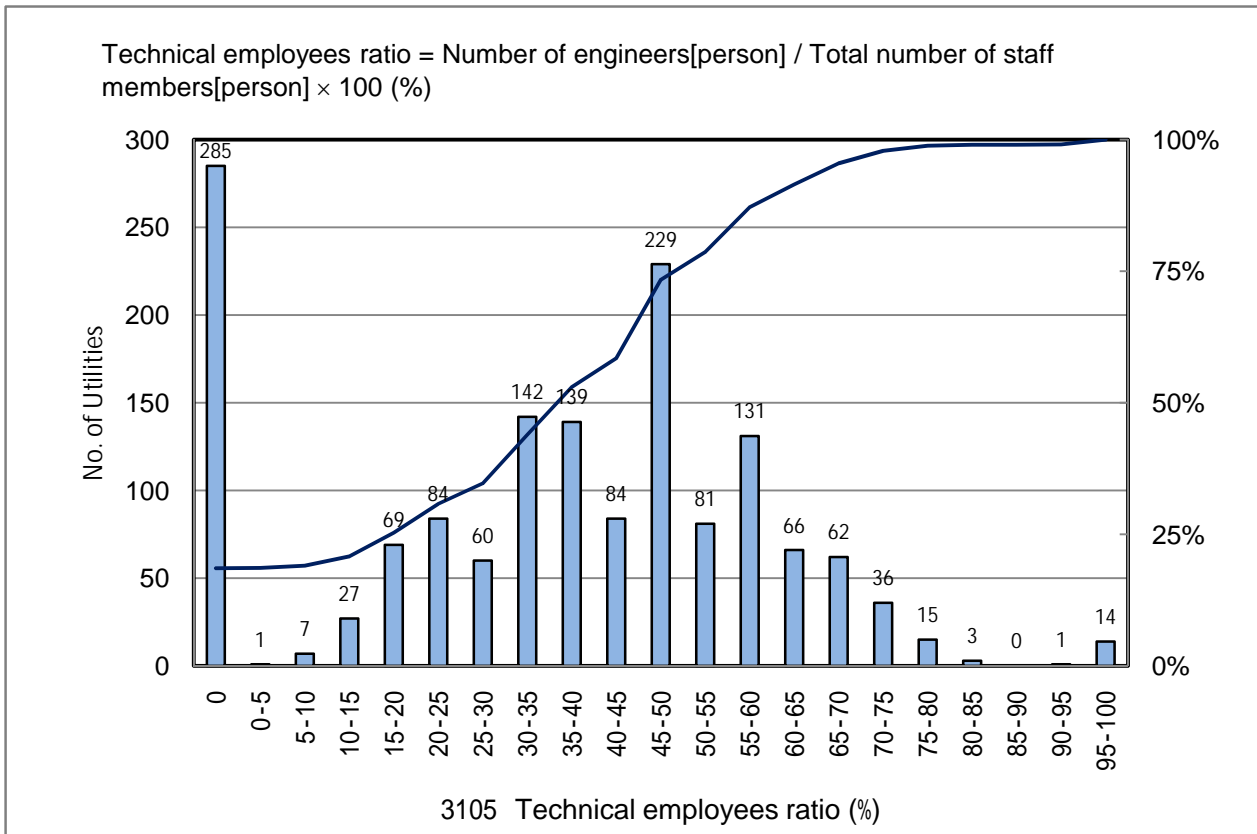


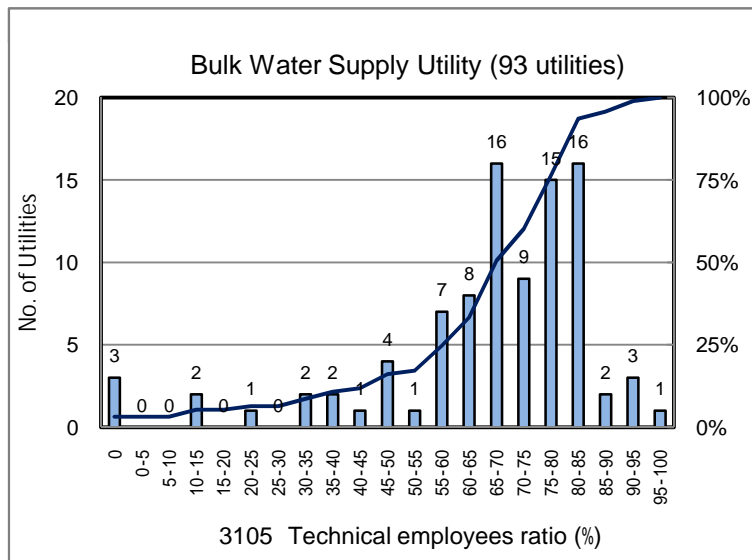
3105 Technical employees ratio (%)

No. of Utilities:1536

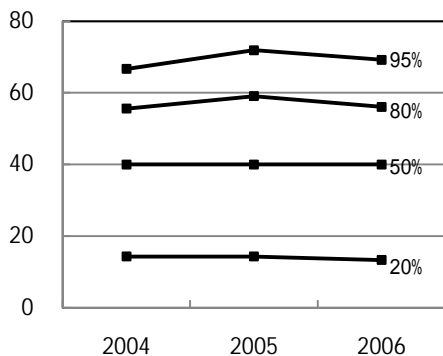


Percentile Value

| W.S. | 2004 | 2005 | 2006 | Rem |
|------|------|------|------|-----|
| 95% | 66.7 | 71.9 | 69.2 | |
| 80% | 55.6 | 59.1 | 56.1 | |
| 75% | 50.0 | 55.6 | 52.6 | |
| 50% | 40.0 | 40.0 | 40.0 | |
| 25% | 21.0 | 22.2 | 20.0 | |
| 20% | 14.3 | 14.3 | 13.3 | |
| 5% | 0.0 | 0.0 | 0.0 | |



Tendency of past 3 years



Percentile Value

| B.W.S. | 2006 | Rem |
|--------|------|-----|
| 80% | 80.9 | |
| 50% | 69.7 | |