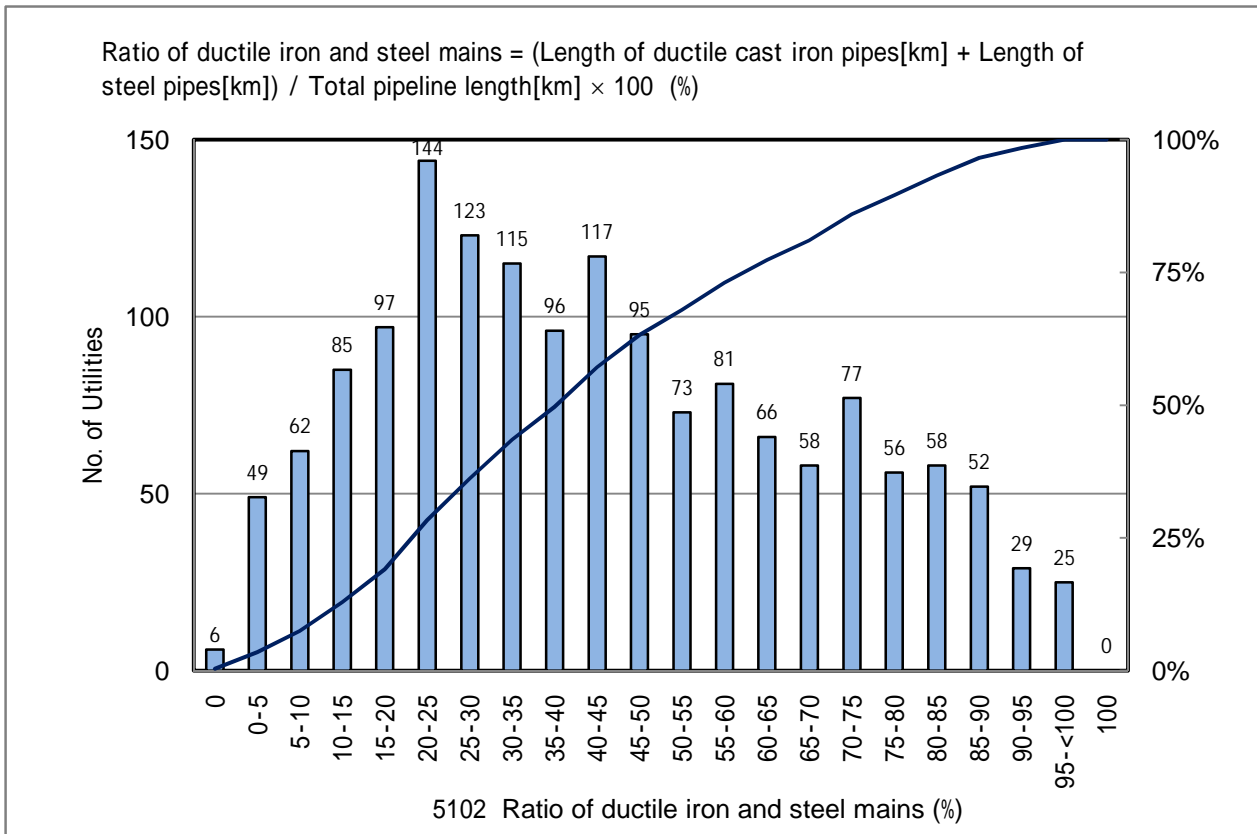


5102 Ratio of ductile iron and steel mains (%)

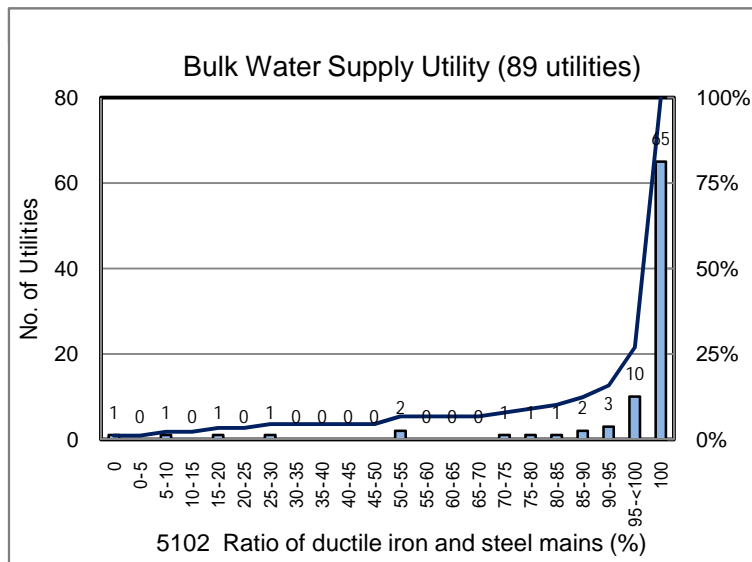
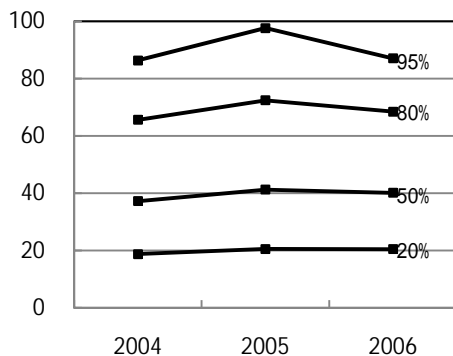
No. of Utilities:1564



Percentile Value

W.S.	2004	2005	2006	Rem
95%	86.3	97.6	87.0	
80%	65.6	72.4	68.4	
75%	59.6	65.9	62.1	
50%	37.2	41.2	40.1	
25%	21.7	23.2	22.9	
20%	18.7	20.5	20.4	
5%	6.6	7.2	7.4	

Tendency of past 3 years



Percentile Value

B.W.S.	2006	Rem
80%	100.0	
50%	100.0	