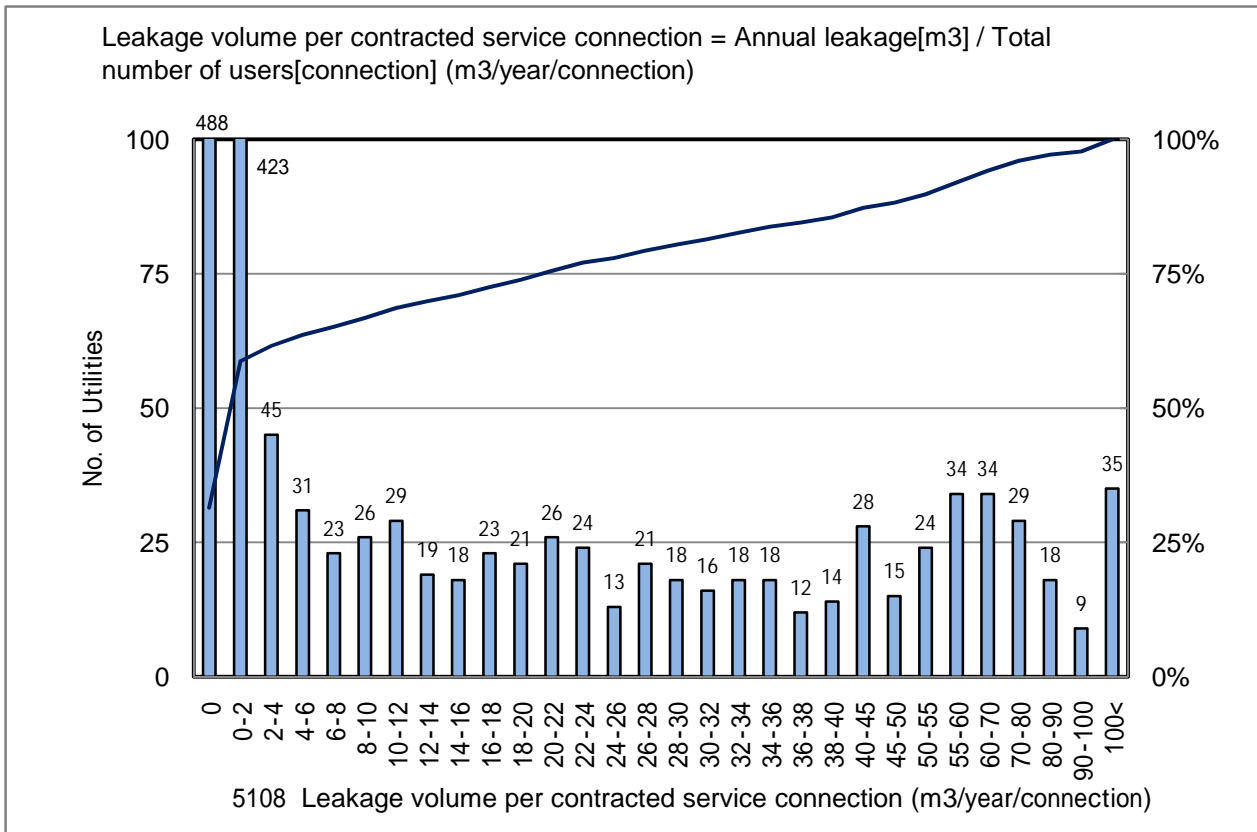


5108 Leakage volume per contracted service connection (m3/year/connection)

No. of Utilities:1552



Percentile Value

W.S.	2004	2005	2006	Rem
95%		71.6	73.7	
80%		25.5	29.0	
75%		18.7	21.3	
50%		0.1	0.2	
25%		0.0	0.0	
20%		0.0	0.0	
5%		0.0	0.0	

Tendency of past 3 years

