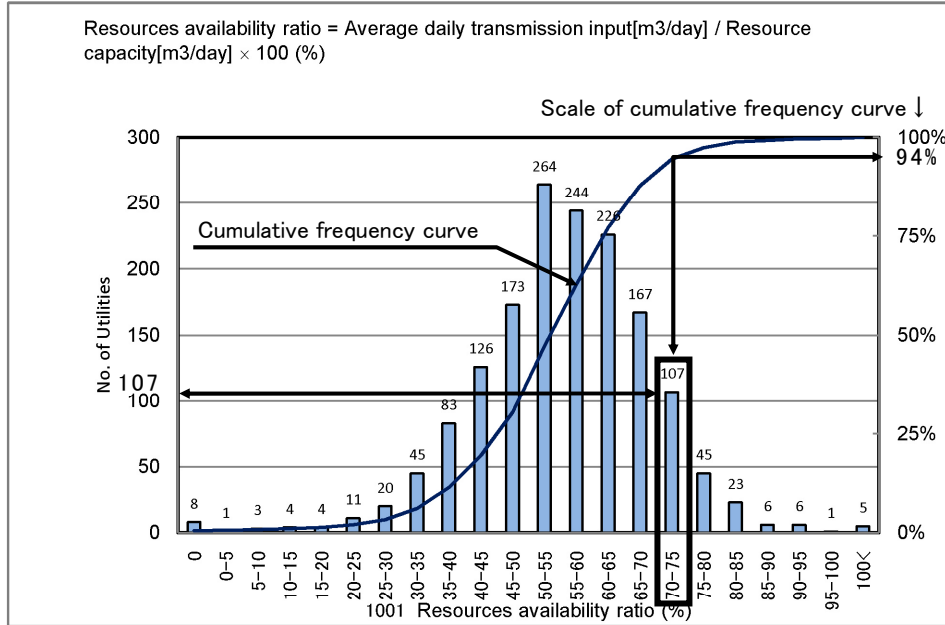


How to read histograms

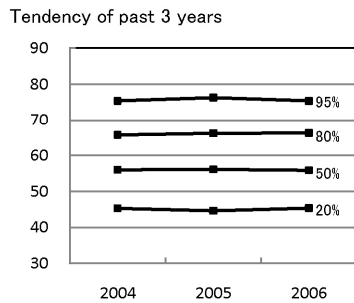
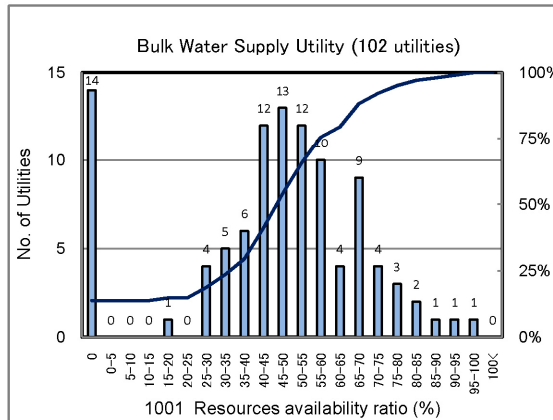
1001 Resources availability ratio(%)

No. of Utilities:1567



Percentile Value

W.S.	2004	2005	2006	Rem
95%	75.4	76.3	75.4	
80%	65.7	66.2	66.3	
75%	63.9	64.1	64.0	
50%	56.0	56.1	55.9	
25%	47.9	47.6	48.0	
20%	45.3	44.6	45.3	
5%	34.4	31.9	33.0	



Percentile Value

B.W.S.	2006	Rem
80%	65.0	
50%	48.2	

PI value is indicated at a certain range (range of 5% on the example) on horizontal axis and number of utilities is indicated on the vertical left axis. The example shows that resource availability ratios of 107 utilities are in the range of 70%-75% (70% < PI ≤ 75%).

The curve shown on the figure is cumulative frequency curve and its scale is shown on the vertical right axis. Number of utilities is cumulated from the utilities whose PI value is low, and is shown by %.