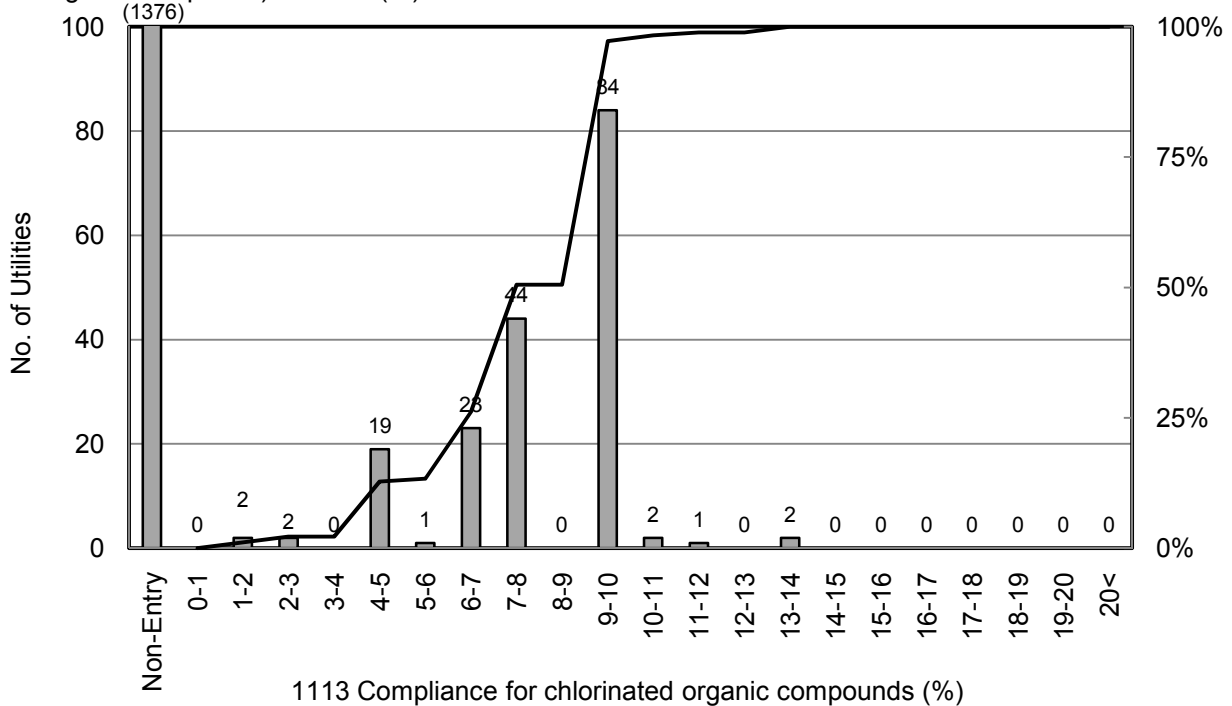


# 1113 Compliance for chlorinated organic compounds (%)

No. of Effective Data: 180

Compliance for chlorinated organic compounds =  $\sum$  (Maximum concentration of each chlorinated organic compound / Target concentration of each chlorinated organic compound) / 9 x 100 (%)



[Percentile Value]

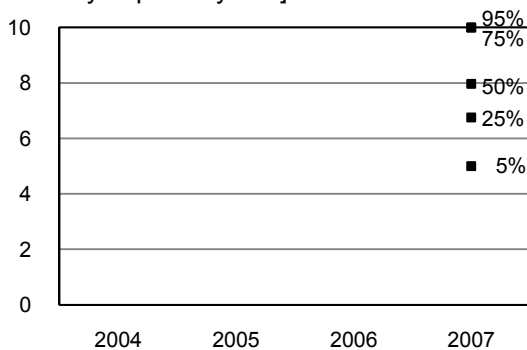
W.S.	95%	75%	50%	25%	5%
2004					
2005					
2006					
2007	10.0	10.0	8.0	6.8	5.0

Chlorinated Organic Compounds	Quality Std.
Carbon Tetrachloride	0.002mg/L
1,1-Dichloroethylene	0.02mg/L
Dichloromethane	0.02mg/L
cis-1,2-Dichloroethylene	0.04mg/L
Tetrachloroethylene	0.01mg/L
Trichloroethylene	0.03mg/L
Benzene	0.01mg/L
1,2-Dichloroethane	*0.004mg/L
1,1,2-Trichloroethane	*0.006mg/L

\* Value of 1,2-Dichloroethane and 1,1,2-Trichloroethane is the value of target of management.

Non-entry excluded from stat parameter.

[Tendency of past 4 years]



[Scatter Plot of W.S.Population (X) and PI Value (Y)]

