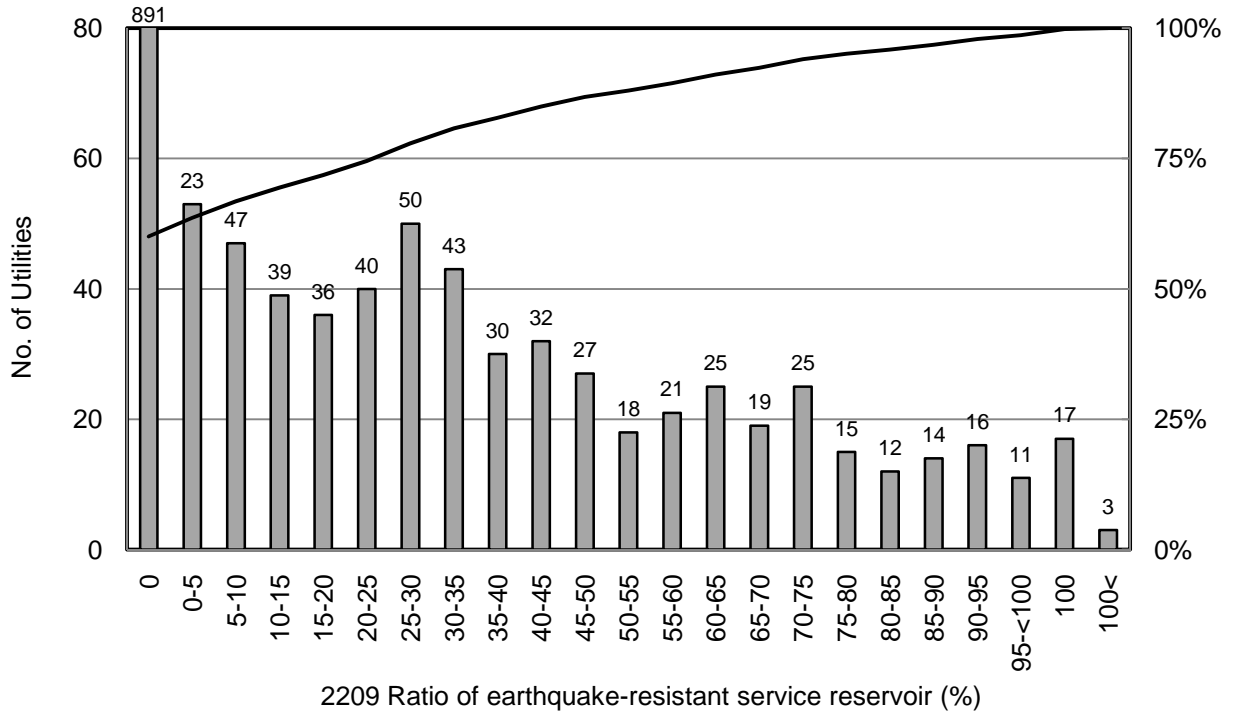


# 2209 Ratio of earthquake-resistant service reservoir (%)

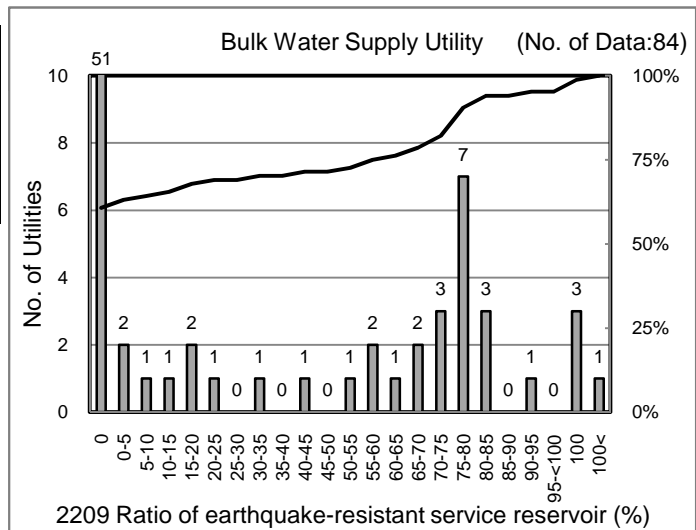
No. of Effective Data: 1,484

Ratio of earthquake-resistant service reservoir = Capacity of earthquake-resistant service reservoirs[m<sup>3</sup>] / Capacity of all service reservoirs[m<sup>3</sup>] x 100 (%)

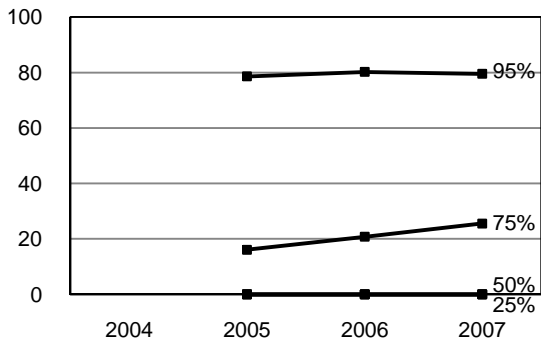


[Percentile Value]

W.S.	95%	75%	50%	25%	5%
2004					
2005	78.6	16.1	0.0	0.0	0.0
2006	80.2	20.8	0.0	0.0	0.0
2007	79.6	25.6	0.0	0.0	0.0



[Tendency of past 4 years]



[Percentile Value]

B.W.S.	95%	75%	50%	25%	5%
2006	90.1	54.8	0.0	0.0	0.0
2007	92.1	59.5	0.0	0.0	0.0

[Scatter Plot of W.S. Population (X) and PI Value (Y)]

