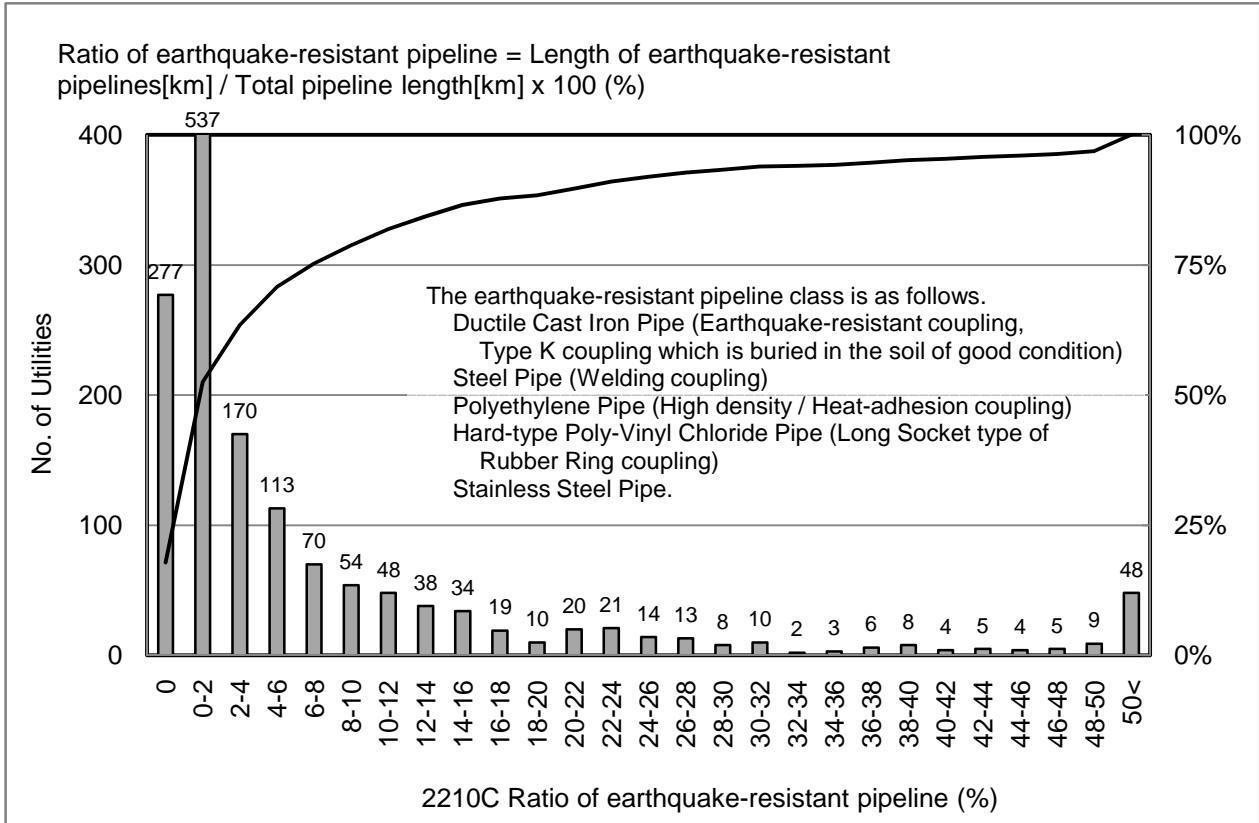


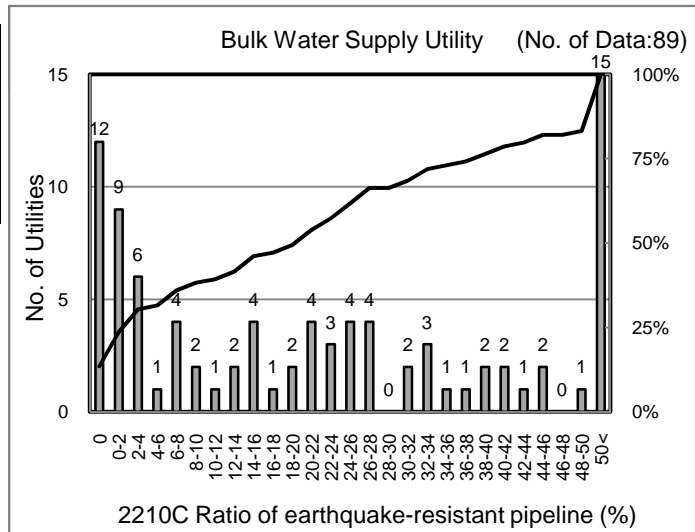
2210C Ratio of earthquake-resistant pipeline (%)

No. of Effective Data: 1,550

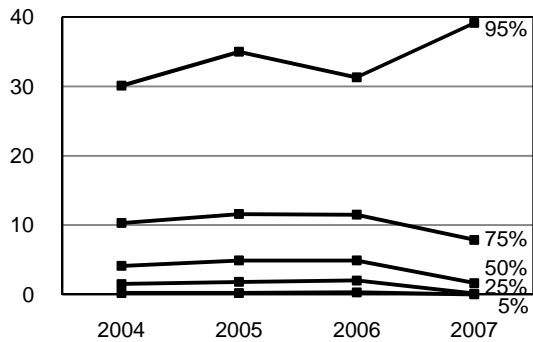


[Percentile Value]

W.S.	95%	75%	50%	25%	5%
2004	30.1	10.3	4.1	1.5	0.2
2005	35.0	11.6	4.9	1.8	0.2
2006	31.3	11.5	4.9	2.0	0.3
2007	39.2	7.9	1.6	0.1	0.0



[Tendency of past 4 years]



[Percentile Value]

B.W.S.	95%	75%	50%	25%	5%
2006	66.1	37.6	20.8	3.4	0.0
2007	79.8	39.0	20.3	2.2	0.0

[Scatter Plot of W.S. Population (X) and PI Value (Y)]

